

## SIGNATURE PAGE



### United Nations Development Programme Bureau for Development Policy-Environment and Energy Group

#### Support to GEF Eligible CBD Parties for carrying out 2010 Biodiversity Targets National Assessments (BD 4NR Phases I & II)

Strategic Plan Mainstreaming environment and energy in MDG-based policy and Outcome[s]/Indicator[s]: planning frameworks at the national level

Expected Outcomes/Indicators: The main **Objective** is to enable GEF eligible CBD parties, through their respective biodiversity sectors, to assess progress towards the achievement of the 2010 Biodiversity Targets at national level through a country-wide, stakeholder consultation process and to appropriately report and communicate on it through the fourth national report of the Convention on Biological Diversity (CBD) and associated products.

#### Outcomes

- Up to 90 Countries supported financially and substantively with their 2010 Biodiversity Targets National Assessments and the production of the fourth national report and other associated reports in a timely and expedited manner.
- Knowledge Management, Monitoring, Learning, Adaptive Feedback & Evaluation. Through its strategy and partnerships, the project will generate, manage and disseminate knowledge for supporting the 2010 Targets assessment process by countries

Executing Entity: UNDP-BDP-EEG

Implementing Agencies: UNDP

#### **Brief description**

The purpose of this substantive revision is to reflect additional GEF resources for Phase II of the project and to capture improvements / modifications since the initiation of Phase I. With focus on the 2010 Biodiversity Commitments at country level, this global umbrella project financed by the Global Environment Facility (GEF) was designed in two phases, each approved by the GEF as a Medium Size Project (MSP), Phase I on November, 07, 2007 and Phase II on October 08, 2008. The project is eligible within the GEF's Enabling Activities window and is implemented through a partnership between UNDP and UNEP. Both phases of the project were designed to reach out with funding and technical support a maximum of 90 interested countries among those eligible within the GEF Biodiversity Focal Area (BD), 42 in Phase I (already assisted) and up to 48 in Phase II.

This will be done through assessing progress towards the 2010 Target through a national participatory assessment process, using the provisional framework for goals and targets adopted by the CBD COP decision VIII/15 and the guidelines for the fourth national report of the CBD to be used in connection with the national assessment. The joint partnership and umbrella approach are aimed at reducing transaction costs of individual

country requests, providing the GEF, UNDP and UNEP an opportunity for managing the biodiversity Enabling Activities more strategically in close partnership with the CBD and other key global actors. Activities at country level will include data gathering – building, wherever possible, on existing data and processes – stakeholder consultations, as well as reporting and communicating on 2010 Targets. Extensive guidance will be available both with regards to the 2010 assessment process, but also to the reporting and communication of results. Using the Clearing House Mechanism (CHM) of the CBD as well as a project webpage within the CBD website and an intranet being established for this project, information exchange and networking on the theme will be developed and constantly updated, permitting also on-line status reporting in real-time to the CBD, the GEF, countries, interested partners, organizations and individuals. Countries will use the CBD guidelines for the fourth national reports, but other products from country level activities may also be envisaged.

| <b><u>Project details:</u></b> |   |
|--------------------------------|---|
| <b>Programme Period:</b>       | 2008-2011   |
| <b>Project ID:</b>             | PIMS 3918 / Atlas Award: 00057358 / Atlas Proposal: 00047594  |
| <b>Start date:</b>             | 17 March 2008   |
| <b>End date:</b>               | 16 March 2011   |
|                                | 4 years, of which 3 years with UNDP activities  |
| <b>Management Arrangement:</b> | DEX – Direct Execution Modality<br>UNDP/BDP/EEG   |
| <b>Implementing Partner:</b>   | UNDP Country Offices (up to 90)<br>Umbrella GEF project co-implemented by UNDP (lead) and UNEP. Collaboration arrangements are as described in this PRODOC and in UNEP's mirror PRODOC. |

| <b><u>Project Budget - GEF</u></b>                                 |                  |                  |                    |
|--|------------------|------------------|--------------------|
| <b>Allocated resources to be implemented by UNDP</b>               | <b>Phase I</b>   | <b>Phase II</b>  | <b>TOTAL</b>       |
| <b>Revised budget total under this PRODOC (Phase I + Phase II)</b> | <b>\$885,000</b> | <b>\$980,000</b> | <b>\$1,865,000</b> |

# Phase I PRODOC Signature

## SIGNATURE PAGE

Country: Global

UNDAF Outcome(s)/Indicator(s):

To assist country parties to fulfill national reporting obligations under the global conventions (Convention on Biological Diversity).

Expected Outcome(s)/Indicator (s):

The project is aligned with MYFF 2004-2007 Goals and Service Lines 3.5 "Conservation and sustainable use of biodiversity".

*(CP outcomes linked t the SRF/MYFF goal and service line)*

Expected Output(s)/Indicator(s):

National capacity building of key government institutions, and other stakeholders strengthened and improved with respect to biodiversity conservation

*(CP outcomes linked t the SRF/MYFF goal and service line)*

Implementing partner:


The project will be executed through Direct Execution (DEX)

Other Partners:

United Nations Environment Programme (as co-implementing agency for GEF funds) and Convention on Biodiversity Secretariat; UNDP Biodiversity Global Programme; MDG Support Project (hosted by UNDP); Countdown 2010 Initiative; 2010 Biodiversity Indicators Partnership Project; Global Environment Facility Secretariat

|   |   |  |                  |   |           |   |           |                |           |
|---|---|--|------------------|---|-----------|---|-----------|----------------|-----------|
| <p>Programme Period: 2004-2007</p> <p>Programme Component: Energy and Environment</p> <p>Project Title: Support to GEF Eligible CBD Parties for carrying out 2010 Biodiversity Targets National Assessments – Phase I</p> <p>Project ID: PIMS 3918 / Atlas Award: 00057358 / Atlas Proposal: 00047594</p> <p>Project Duration: Phase I = 3 years; of which 2 years with UNDP activities</p> <p>Management Arrangement: DEX – Direct Execution Modality<br/>Umbrella GEF project co-implemented by UNDP (lead) and UNEP. Collaboration arrangements are as described in this PRODOC and in UNEP's mirror PRODOC.</p> | <p>Allocated resources for Phase I), of which: <b>\$1,752,950</b></p> <ul style="list-style-type: none"> <li>• GEF approved Total (of which): <b>\$1,000,000</b></li> </ul> <table border="1" style="width: 100%; border-collapse: collapse; background-color: #e0e0e0;"> <tr> <td style="text-align: center;"><b>To be implemented UNDP<br/>(covered by this prodoc)</b></td> <td style="text-align: right;"><b>\$885,000</b></td> </tr> </table> <p>[To be implemented by UNEP] <span style="float: right;">\$115,000 ]</span></p> <ul style="list-style-type: none"> <li>• In kind contributions <span style="float: right;">t.b.d.</span></li> <li>• Partner managed co-financing for Phase I (total \$752,950) :             <table style="width: 100%; margin-left: 20px;"> <tr> <td>UNDP Millennium Development Goals Support Project</td> <td style="text-align: right;">\$257,500</td> </tr> <tr> <td>UNDP Global Biodiversity Programme (Energy and Environment)</td> <td style="text-align: right;">\$275,000</td> </tr> <tr> <td>Countdown 2010</td> <td style="text-align: right;">\$220,450</td> </tr> </table> </li> </ul> | <b>To be implemented UNDP<br/>(covered by this prodoc)</b> | <b>\$885,000</b> | UNDP Millennium Development Goals Support Project | \$257,500 | UNDP Global Biodiversity Programme (Energy and Environment) | \$275,000 | Countdown 2010 | \$220,450 |
| <b>To be implemented UNDP<br/>(covered by this prodoc)</b>  | <b>\$885,000</b>  |  |                  |   |           |   |           |                |           |
| UNDP Millennium Development Goals Support Project   | \$257,500   |  |                  |   |           |   |           |                |           |
| UNDP Global Biodiversity Programme (Energy and Environment)   | \$275,000   |  |                  |   |           |   |           |                |           |
| Countdown 2010  | \$220,450   |  |                  |   |           |   |           |                |           |

Agreed by (UNDP):

  
 Olav Kjørven  
 Assistant Administrator and Director, Bureau for Development Policy



Signed on 18 March 2008

24-January-2008



**UN Development Programme**  
Global Environment Facility

Award ID: 00047594  
Award Title: PIMS 3918 BD MSP: GLO Support to  
CBD 2010 targets + 4NR  
Start Year: 2008  
End Year: 2008

Implementing Partner  
(Executing Agency): UNDP (Direct Execution)

Responsible Party  
(Implementing Agent): UNDP (Direct Execution)


Revision Type:

Brief Description:

[Empty box for Brief Description]

| Budget (US\$) as of Last Revision on |                                  |             |
|--------------------------------------|----------------------------------|-------------|
| Donor                                | Fund                             | Amount      |
| GEFTrustee                           | 62000 GEF Voluntary Contribution | 190,000.00  |
| Total Budget ( 2008 and Beyond )     |                                  | 190,000.00  |
| Total Expenditure ( 2007 and Prior ) |                                  | 0.00        |
| Award Total                          |                                  | 0.00        |
| Unprogrammed/Unfunded                |                                  | -190,000.00 |

Agreed by (UNDP):

  
Olav Kjørven  
Assistant Administrator and Director, Bureau for Development Policy

  
3/1/2008  
2008



# UNDP PROJECT DOCUMENT - SUBSTANTIVE REVISION

## UNDP-GEF Medium-Size Project (MSP)

Governments of

*[New Countries to be assisted during Phase II:]* Pakistan, Eritrea, Angola, Dominican Republic, Burkina Faso, Argentina, Ethiopia, Algeria, Mali, Sudan, Costa Rica, Botswana, Burundi, Chad, Tanzania, Grenada, Egypt, Zambia, Venezuela, Mauritius, Rwanda, Guinea-Bissau (and others, up to a maximum of 48 countries)

## United Nations Development Programme

**In partnership with the  
United Nations Environment Programme (as co-implementing agency for GEF funds)**

And

Convention on Biodiversity Secretariat  
UNDP Biodiversity Global Programme  
MDG Support Programme (hosted by UNDP)  
Countdown 2010 Initiative  
2010 Biodiversity Indicators Partnership Project  
Global Environment Facility Secretariat

## **Support to GEF Eligible CBD Parties for carrying out 2010 Biodiversity Targets National Assessments – Phase II PRODOC**

### **Brief description**

The purpose of this substantive revision is to reflect additional GEF resources for Phase II of the project and to capture improvements / modifications since the initiation of Phase I. Revised and/or new text is highlighted.

With focus on the 2010 Biodiversity Commitments at country level, this global umbrella project financed by the Global Environment Facility (GEF) was designed in two phases, each approved by the GEF as a Medium Size Project (MSP), Phase I on November, 07, 2007 and Phase II on October 08, 2008. The project is eligible within the GEF's Enabling Activities window and is implemented through a partnership between UNDP and UNEP. Both phases of the project were designed to reach out with funding and technical support a maximum of 90 interested countries among those eligible within the GEF Biodiversity Focal Area (BD), 42 in Phase I (already assisted) and up to 48 in Phase II. This will be done through assessing progress towards the 2010 Target through a national participatory assessment process, using the provisional framework for goals and targets adopted by the CBD COP decision VIII/15 and the guidelines for the fourth national report of the CBD to be used in connection with the national assessment. The joint partnership and umbrella approach are aimed at reducing transaction costs of individual country requests, providing the GEF, UNDP and UNEP an opportunity for managing the biodiversity Enabling Activities more strategically in close partnership with the CBD and other key global actors. Activities at country level will include data gathering – building, wherever possible, on existing data and processes – stakeholder consultations, as well as reporting and communicating on 2010 Targets. Extensive guidance will be available both with regards to the 2010 assessment process, but also to the reporting and communication of results. Using the Clearing House Mechanism (CHM) of the CBD as well as a project webpage within the CBD website and an intranet being established for this project, information exchange and networking on the theme will be developed and constantly updated, permitting also on-line status reporting in real-time to the CBD, the GEF, countries, interested partners, organizations and individuals. Countries will use the CBD guidelines for the fourth national reports, but other products from country level activities may also be envisaged.

## Table of Contents

| <u>Section</u>   | <u>Page</u> |
|--|-------------|
| <b>SECTION I: ELABORATION OF THE NARRATIVE .....</b>   | <b>8</b>    |
| PART I: Situation Analysis .....   | 8           |
| PART II: Strategy .....  | 8           |
| PART III: Management Arrangements .....  | 19          |
| PART IV: Monitoring and Evaluation Plan and Budget .....                                       | 22          |
| PART V: Legal Context .....  | 24          |
| <b>SECTION II: STRATEGIC RESULTS FRAMEWORK .....</b>   | <b>25</b>   |
| PART I: Logical Framework Analysis .....   | 25          |
| <b>SECTION III: TOTAL BUDGET AND WORKPLAN .....</b>  | <b>28</b>   |
| <b>SECTION IV: ADDITIONAL INFORMATION .....</b>  | <b>31</b>   |
| PART I: Approvals and Endorsements .....   | 31          |
| 1) Clearance for the adoption of the Direct Execution Modality (DEX) dated 14 March 2008 ..... | 31          |
| 2) Record of Countries' Endorsements .....   | 34          |
| PART II: Terms of References for key project staff and main sub-contracts .....                | 37          |
| 3) Preparation of 2010 Guide Publication .....   | 37          |
| 4) Consultant: Programme Support to the Project .....  | 38          |
| 5) Outline of tasks for the Evaluation Consultants .....                                       | 39          |
| <b>PROJECT APPENDICES .....</b>  | <b>40</b>   |
| <b>APPENDIX 1. REQUESTS FOR CEO APPROVAL (APPROVED MSPs PHASES I AND II) .....</b>             | <b>41</b>   |
| <b>APPENDIX 2. CO-FINANCING LETTERS .....</b>  | <b>43</b>   |
| <b>APPENDIX 3. CEO APPROVAL (PHASES I AND II) AND UPDATED TRACKING SHEET .....</b>             | <b>44</b>   |
| <b>APPENDIX 4. MINUTES OF PROJECT APPRAISAL COMMITTEE MEETING .....</b>                        | <b>45</b>   |
| <b>APPENDIX 5. DRAFT TEMPLATE FOR FRAMEWORK SERVICE AGREEMENT .....</b>                        | <b>47</b>   |
| <b>APPENDIX 6. WORK PLAN AND BUDGET 2008 / 2009 - FOR ENTRY INTO ATLAS .....</b>               | <b>49</b>   |

### Note:

Substantive changes to the PRODOC are marked in burgundy colour font and changes introduced after the PAC meeting (held on 25 Nov 2008) are marked in yellow highlight.

## Acronyms

|              |   |
|--------------|---|
| BIP2010      | Global Project '2010 Biodiversity Indicators Partnership'                               |
| 2010 BIP     | Global Project '2010 Biodiversity Indicators Partnership'                               |
| BD           | Biodiversity Focal Area   |
| BINU Project | Global Project 'Biodiversity Indicators for National Use'                               |
| CBD          | Convention on Biological Diversity  |
| CHM          | Clearing House Mechanism  |
| CO           | UNDP Country Office   |
| COP          | Conference of the Parties   |
| EA           | Enabling Activity   |
| EEG          | Environment and Energy Group (within UNDP's Bureau for Development Policy – BDP)        |
| EEG-BD       | Biodiversity Enabling Activity Advisor // Programme Associate at HQs (within EEG)       |
| FSA          | Framework Service Agreement   |
| GEF          | Global Environment Facility   |
| IA           | Implementing Agency   |
| ISS          | Implementation Support Services   |
| IUCN         | World Conservation Union  |
| LDCs         | Least Developed Countries   |
| MDG          | Millennium Development Goals  |
| MSP          | Medium-Size Project   |
| NBSAP        | National Biodiversity Strategy and Action Plan  |
| NCSA         | National Capacity Self-Assessment   |
| OPF          | Operational Focal Point (for GEF)   |
| PIF          | Project Identification Form   |
| PSC          | Project Steering Committee  |
| RAF          | Resource Allocation Framework   |
| RCU          | UNDP/GEF Regional Coordination Unit   |
| SCBD         | CBD Secretariat   |
| SEBI2010     | Regional Project 'Streamlining European 2010 Biodiversity Indicators'                   |
| SIDS         | Small Island Developing States  |
| UNDP         | United Nations Development Programme  |
| UNEP         | United Nations Environment Programme  |
| UNU          | United Nations University   |
| WCPA         | World Commission on Protected Areas   |
| WGRI-2       | Second meeting of the CBD's Working Group on Review of Implementation of the Convention |
| WSSD         | World Summit on Sustainable Development   |

## SECTION I: ELABORATION OF THE NARRATIVE

### PART I: SITUATION ANALYSIS

1. Biodiversity is currently being lost at unprecedented rates due to human activities around the globe. To address this problem, the Conference of the Parties (COP) to the Convention on Biological Diversity (CBD) adopted a Strategic Plan in 2002 (decision VI/26) aiming at a more effective and coherent implementation of the three objectives of the CBD through the achievement, by the year 2010, of a significant reduction of the current rate of biodiversity loss at the global, regional and national level as a contribution to poverty alleviation and to the benefit of all life on earth. In 2006, the CBD COP8 adopted a framework for monitoring implementation of the achievement of the ‘**2010 Targets**’ and integration of targets into the CBD’s thematic programmes of work (decision VIII/15 – see Appendix 1, Annex E-6). More specifically, decision VIII/15 promoted the further development of the global outcome-oriented indicators, with particular emphasis on those that are closely linked to the Millennium Development Goals. The same decision also urged Parties and invited other Governments to: (1) develop national and/or regional goals and targets and related national indicators, considering submissions from indigenous and local communities and other stakeholders, and (2) incorporate them into *inter alia* relevant plans, programmes and initiatives, including national biodiversity strategies and action plans.

2. The following are the goals of the **2010 Biodiversity Commitments**:

- Goal 1. Promote the conservation of the biological diversity of ecosystems, habitats and biomes
- Goal 2. Promote the conservation of species diversity
- Goal 3. Promote the conservation of genetic diversity
- Goal 4. Promote sustainable use and consumption
- Goal 5. Pressures from habitat loss, land use change and degradation, and unsustainable water use, reduced
- Goal 6. Control threats from invasive alien species
- Goal 7. Address challenges to biodiversity from climate change, and pollution
- Goal 8. Maintain capacity of ecosystems to deliver goods and services and support livelihoods
- Goal 9. Maintain socio-cultural diversity of indigenous and local communities
- Goal 10. Ensure the fair and equitable sharing of benefits arising out of the use of genetic resources
- Goal 11. Parties have improved financial, human, scientific, technical and technological capacity to implement the Convention

3. The CBD indicates that decision VII/30<sup>1</sup> is to be viewed as a flexible framework within which national and/or regional targets may be developed, according to national priorities and capacities, and taking into account differences in diversity between countries. It is within this framework that the current project proposes to benefit participating countries. In May 2007, the UN Secretary General announced, in a statement that the 2010 Biodiversity Targets are “*fully integrated into the framework of the Millennium Development Goals and, as a sign of further support, the international community decided to declare 2010 the International Year for Biological Diversity*”.

### PART II: STRATEGY

4. With focus on the 2010 Biodiversity Commitments at the country level, this global project has two implementation phases. Country-level activities will be implemented through sub-projects applying an umbrella approach, under which a minor global component provides cohesion among these sub-projects. The project is implemented through a partnership between UNDP and UNEP, where the two agencies complement each other through their comparative advantage in their assistance to eligible countries within the GEF’s Biodiversity Focal Area (BD)<sup>2</sup>. The funding from the Global Environment Facility (GEF) was obtained in the form of two Medium

---

<sup>1</sup> See in also paragraph 12 of CBD COP Decision VIII/15, (Appendix 1a, Annex E-6. Excerpt from CBD COP Decisions VIII/15 and VIII/14).

<sup>2</sup> There are 150 eligible under the GEF Biodiversity Focal Area (*RAF Public Disclosure Document*, GEF Secretariat, 15 Sep 2006).



Size Projects (MSP), each corresponding to a phase, and both MSPs approved within the GEF's Enabling Activities window. Reference is made to details in the Project Information Form (PIF) and the two MSP proposals. Phase I MSP was approved on 07 November 2007 and Phase II MSP on October 08, 2008. In summary, this project document provides an expedited mechanism for the development, submission and approval of countries' proposals for measuring progress towards the 2010 target (through the 2010 Biodiversity Targets National Assessments) and the preparation of the fourth national report to the CBD COP by beneficiary countries. This is done through a coordinated interagency collaboration. Country proposals can assess an envelope of up to as defined by the GEF in their instructions to UNDP and UNEP.

**5. This project document (PRODOC) covers Phase II of the project and represents a substantive revision of an existing and DEX cleared PRODOC from March 2007. The current PRODOC not only accommodates the approval of the Phase II MSP and includes the upwards revision of the budget to add the portion of the funding assigned to UNDP under Phase II., but it also captures improvements in project design since the initiation of Phase I.**

6. During the Phase I, the project reached out 42 BD eligible countries with funding and technical support and has allocated 100% of available resources. Under Phase II, the project is slated to assist up to 48 countries, reaching a maximum total of 90 countries in both phases. The financial support is provided through a funding envelope of \$20,000<sup>3</sup> per country, as defined by the GEF (issued in the form of grants with any unused portions to be returned to the project / GEF Trustee), while substantive support is provided through project publications, targeted webpages and the dissemination of project relevant information. In addition LDCs and SIDS eligible CBD Parties have the possibility of having the fourth national report reviewed by experts before submission to the CBD COP.

7. At the country level, activities consist of an initial assessing of progress towards the 2010 Target through a national participatory assessment process, using the provisional framework for goals and targets adopted by the CBD COP decision VIII/15. The guidelines for the fourth national report of the CBD are to be used in connection with the national assessment. More specifically, this project addresses the need to engage broad groups of stakeholders at the national level in the process of assessing and reporting on progress towards the achievement of the 2010 Biodiversity Targets. The project will contribute to the relevant policy agenda and decision-making processes both at global level and in participating countries as follows:

- Encouraging and supporting the full implementation of the binding international commitments and necessary actions that contribute to biodiversity conservation, particularly the CBD and related instruments;
- Demonstrating clearly what progress countries are making in meeting the 2010 Biodiversity Commitment;
- Linking the assessment process to other important policy dialogues, in particular the achievement of the Millennium Development Goals (MDGs) and the implementation of National Biodiversity Strategy and Action Plans; and
- Gain public attention at country level for the challenge of meeting the 2010 Biodiversity Target.
- Ensure broader ownership in establishing the post 2010 regime.

8. The joint agency partnership and umbrella approach are aimed at reducing transaction costs of individual country requests, providing the GEF, UNDP and UNEP an opportunity for managing the biodiversity Enabling Activities more strategically in close partnership with the CBD and other key global actors.

9. It is important to stress that the funding envelope slated for each sub-project is only for initiating the process of undertaking the 2010 assessments, in particular bringing together relevant stakeholders in the process. If countries wish to go beyond what is feasible within the funding envelope and associated co-financing, additional funding will need to come from sources other than this global project. Should there be sufficient demand from a number of countries to carry out additional activities relate to the 2010 target at the national level, IAs may consider, in partnership with the GEF and the CBD Secretariat, the formulation of another umbrella project with

---

<sup>3</sup> Appendix 1b, Annex E-5 contains the format of the country request. The format is also available online in English, French and Spanish in the 4NR Portal ([www.cbd.int/nr4](http://www.cbd.int/nr4)).

the aim of providing the framework for such activities. Funding for it, would necessarily have to come from countries' share under the Resource Allocation Framework (RAF). Under phase I, out of 42 countries, 17 have manifested an interest in going more in depth with indicator development and assessment.

10. **Results from the project's Phase I** can be summarized as follows (please refer to Appendix 1b, Annex E-8 for more details of project results with respect to indicators established for phase I in the strategic results framework):

- Requests for grants for 42 countries (out of maximum 42 sub-projects) have been approved by for carrying out 2010 Biodiversity Targets National Assessments and producing the fourth national report to the CBD COP. These requests can be found online in the 4NR Web Portal ([www.cbd.int/nr4](http://www.cbd.int/nr4)).
- The following project publication has been presented for discussion at the CBD COP9 and is expected to be finalized and disseminated soon: UNDP (2008): *Towards 2010 - A guide for setting 2010 national biodiversity targets and for preparation of the fourth national report to the Convention on Biodiversity*, published in collaboration with the UN University Institute of Advanced Studies and the CBD Secretariat.
- The 4NR Web Portal is functional and being constantly updated.
- Of the funds entrusted to UNDP (\$885,000), 98% is committed and 24% disbursed
- Of the funds entrusted to UNEP (\$115,000), 50% is committed and 25% disbursed.<sup>4</sup>
- Realised co-financing from UNDP and Countdown 2010 at the global level, amounting to \$732,500, has supported project implementation during Phase I.
- Co-financing from countries' governments have been accounted for through submitted proposals and amount to \$447,271 for 42 countries; i.e. an average of \$10,649 per country against \$20,000 per country from the GEF.
- Altogether, global and national co-financing in Phase I was \$1,179,771 against \$1,000,000 from the GEF.

11. Phase II represents the continuation of Phase I. Same procedures will be applied and 90% of the funding will be dedicated to direct country support through grants with a target of 48 countries to assist.

12. It is important to note that, while it is recognised through COP guidance (Decisions VII/30 and VIII/15<sup>5</sup>) that the fourth national report, the revision of a country's NBSAP and the process of setting national 2010 targets are all linked processes, the exact way in which they are linked will vary from country to country. Given this, it is opportune for CBD Parties to link the consultative process for the development of the national 2010 biodiversity targets with the process for preparing the fourth national report to the CBD COP, with due consideration for timing, deadlines and relevant COP decisions. Still, when reporting on the national achievement of the 2010 target, the CBD Secretariat emphasizes the importance of using the guidelines endorsed by the COP8 for the fourth national reports, as the guidelines will facilitate analysis of progress towards the 2010 target at the global level and it will provide the CBD with more standardized country-specific information. Furthermore, the use of the guidelines was requested in a relevant decision adopted by the COP8 (decision VIII/14<sup>6</sup>). The submission of the fourth national report to the CBD by the **30 March 2009 deadline** is crucial for the production of the Third Global Biodiversity Outlook and the preparation of reviews and assessments of progress towards the 2010 biodiversity targets for consideration by the COP in its 10th meeting in 2010.

13. All countries eligible to biodiversity funding under the GEF may apply for funding under this project applying the principle of 'first-come-first-serve', provided that the eligibility criteria are met. As an additional rule, the GEF requested that countries that apply for funding under this project must have completed their benchmarks under other Biodiversity EAs for which they received GEF funding. These may include third

---

<sup>4</sup> Exact figures to be confirmed. The funds for web consultants based in Montreal and Nairobi respectively have been committed. UNEP is in the process of committing the rest of the funds for country reviews. This was not done before because countries have not completed the development of the reports.

<sup>5</sup> See Appendix 1a, Annex E-6 for Decision VII/15.

<sup>6</sup> Ibid.

national report, and/or National Biodiversity Strategies and Action Plans (NBSAPs). In order to avoid possible delays in the application and approval process of sub-projects from the implementation of this additional rule, it is suggested that countries that have not completed the previously funded activities submit together with their request a letter of commitment for completing those activities within a fixed time frame.

14. Implementing Agencies (IAs) may give priority consideration to Least Developed Countries (LDCs) and Small Island Developing States (SIDS), as so defined according to UN set criteria.<sup>7</sup> This will be done by reinforcing communication to these countries about the project, encouraging their governments to submit requests for funding as early as they can, as the new phase becomes operational. This strategy of targeted communication to LDCs and SIDS has proven to work well in Phase I, where 43% of countries' requests came from LDCs and/or SIDS, as opposed to a ratio of 24% of LDCs and/or SIDS among all GEF eligible CBD Parties. Communication can either come from UNDP, UNEP or the CBD Secretariat.

15. Activities at the country level will include data gathering – building, wherever possible, on existing data and processes – stakeholder consultations, as well as reporting and communicating on 2010 Targets. Extensive guidance will be available both with regards to the 2010 targets assessment process and the preparation of the fourth national report. The ‘**Towards 2010 Guidebook**’<sup>8</sup> and the ‘**4NR Portal**’<sup>9</sup>, are all examples of this guidance and a direct project result from the implementation of Phase I. Other types of guidance include the ‘Training modules on national reporting for CBD focal points’<sup>10</sup>, sample chapters of the fourth national report produced by selected CBD Parties and links to an array of online resources available through the 4NR Portal<sup>11</sup>. During Phase II, information exchange and networking on the themes of the fourth national report and 2010 target will be developed and constantly updated through the 4NR Portal.

16. The fourth national report of the CBD allows countries to present an analysis of progress towards the 2010 Targets based on analyses of status & trends, threats to biodiversity, implementation of national biodiversity strategies and action plans and of mainstreaming biodiversity into productive sectors and landscapes, among other themes. Reports will be also analyzed in preparation for review of progress towards the 2010 Targets at CBD COP10 in 2010. Countries are therefore required to use the guidelines for the fourth national report prepared by the CBD Secretariat<sup>12</sup> to report on the results of their national assessments of the 2010 Targets. Also as suggested in the guidelines, countries could, in addition, develop other products and sub-products to make the results of 2010 assessments and reports available as widely as possible. These would be country-specific results from this project and may *inter alia* include other types of reports and publications, theme-specific action plans and project proposals based on the assessments. The project will also offer countries the possibility of having their fourth national reports reviewed for technical standards, completeness and consistency before submission to the CBD Secretariat<sup>13</sup>.

17. **The project's development goal** is to contribute to improved planning and decision-making within the biodiversity sector for the conservation of global biodiversity.

18. **The main project objective** is to enable GEF eligible CBD parties, through their respective biodiversity sectors, to assess progress towards the achievement of the 2010 Biodiversity Targets at national level through a country-wide, stakeholder consultation process and to appropriately report and communicate on it through the fourth national report of the CBD and associated products.

19. **Description of Project Results.** The following will be the project's key **Outcomes**:

---

<sup>7</sup> See list in Annex 5 for the list of LDCs and SIDS eligible for GEF biodiversity funding.

<sup>8</sup> [www.cbd.int/nr4/guidelines/2010-guide.shtml](http://www.cbd.int/nr4/guidelines/2010-guide.shtml)

<sup>9</sup> [www.cbd.int/nr4](http://www.cbd.int/nr4)

<sup>10</sup> [www.cbd.int/nr4/guidelines/training](http://www.cbd.int/nr4/guidelines/training)

<sup>11</sup> [www.cbd.int/nr4/resources/links](http://www.cbd.int/nr4/resources/links)

<sup>12</sup> Guidelines and format for the Fourth National Report to the CBD is provided in several UN languages at [www.cbd.int/reports/guidelines/](http://www.cbd.int/reports/guidelines/).

<sup>13</sup> This option will be available to LDCs and SIDs due to capacity constraints and will be carried out by UNEP.

**Outcome 1) Countries supported financially and substantively with their 2010 Biodiversity Targets National Assessments and the production of the fourth national report and other associated reports in a timely and expedited manner.**

UNDP and UNEP will work jointly and in collaboration for the achievement of the project objectives. For countries' focal points, the UN Country Representative will function as a one-stop-shop, both for the submission of countries' 2010 Biodiversity Targets National Assessment requests and for the disbursement of funds using UNDP's Atlas system. The UNDP Country Office will also ensure the close monitoring of activities and the appropriate use of project funds. Furthermore, draft fourth national reports prepared by LDCs and SIDS may be reviewed by UNEP upon request. The key output under this outcome for Phase I is:

*Output 1.0. Financial and substantive support provided to up to 48 new countries (a total of 90 countries in Phases I and II) their 2010 Biodiversity Targets National Assessment.*

A maximum of 90 countries are being targeted for assistance; 42 were effectively assisted in Phase I and up to 48 are expected to be assisted in Phase II. Funding for countries' requests under Phase I is already fully committed and all new requests received since June 2008 are slated to be financed from the Phase II MSP funds being incorporated to this PRODOC through the present substantive and budgetary revision.<sup>14</sup> As in Phase I, the approval of funding under Phase II will continue to be expedited, although considerable delays were registered between July and November 2008 because the budget for Phase II has not been operational. After the operationalisation of the hereby-proposed budget revision (tied to the substantive revision of this PRODOC), the maximum dwell time (i.e. the time between the receipt of an eligible proposal and funds authorization) is expected to be maintained at 31 days. Most eligible countries that provided early letters of endorsement to UNEP were favoured in Phase I<sup>15</sup>. Still, with the exception of Egypt, Mauritius and Eritrea, which submitted proposals between June and October 2008, nine of the countries that had issued initial endorsements to UNEP have not yet submitted country requests in the appropriate format, so their application can be considered early. Targeted communication will be re-sent to these countries with respect to the availability of funding in Phase II. Letters of Endorsement are otherwise obtained on a rolling basis as countries' individual requests are submitted for clearance<sup>16</sup>. The principle of 'first-come-first-serve' will continue to be applied in the processing of countries' requests. IAs and project partners continue to encourage LDCs and SIDS to apply early. In addition, UNDP and UNEP will continue to work together, and in partnership with the CBD, in order to disseminate the availability of additional support to LDCs and SIDS, as per demand, through technical and scientific review by UNEP experts of their fourth national reports before submission to the CBD COP. Finally, substantive support to countries is mostly provided by UNDP through screening (a task performed by COs, RCUs and HQ).

**Outcome 2) Knowledge Management, Monitoring, Learning, Adaptive Feedback & Evaluation**

Through its strategy and partnerships, the project will generate, manage and disseminate knowledge for supporting the 2010 Targets assessment process by countries. It will also provide adaptive feedback and an independent assessment (evaluation) of the project. The evaluation of the project will feed into the preparation of other similar projects in the future. It will also increase the institutional learning with regards to the umbrella approach and modalities of UNDP-UNEP collaboration. Two key outputs are expected under Outcome 2:

*Output 2.1. Guidance material is available to assist countries and Website for information exchange and network on 2010 Targets at national level is developed and constantly updated.*

The 4NR Portal (launched in May 2008) will grow and continue to disseminate knowledge materials designed to guide countries in accessing the funds and preparing their fourth national report and assessing progress towards the 2010 target at the national level. The English version of the 'Towards 2010

---

<sup>14</sup> The list of countries that received funding under Phase I is provided in Appendix 1b, Annex E-3.

<sup>15</sup> See <ftp://ftp.unon.org/dgefftp/lettersfor2010targets>. See also Table 8.

<sup>16</sup> Please refer to the 4NR Portal ([www.cbd.int/nr4](http://www.cbd.int/nr4)) for an insight into countries' approved requests and letters of OFP endorsement.

Guidebook' is already available through the 4NR Portal. The Guide has been translated into French and Spanish and will also be made available through the Portal once editorial revisions have been performed. These mentioned activities are funded from the project's Phase I budget but their implementation is ongoing. Initial feedback received at COP9 on the Guidebook and the Portal indicates that the current umbrella project is not only building upon the success of guidance materials produced in connection with the Third National Report to the CBD<sup>17</sup>, but also going beyond. The 4NR Portal is an integral part of the existing CBD website within the CHM framework. In this sense, no new Website was created, as per recommendation from the GEF Secretariat conveyed through comments to the approved PIF and Phase I MSP. The activity of portal development is lead by UNEP and closely coordinated with the CBD Secretariat with inputs from UNDP and the remainder of project partners. The Portal is still in its initial phase of implementation. When fully developed, it will serve not just to explain the procedures for countries to apply for funding of country activities and distribute knowledge materials, but also to answer frequently asked questions, promote the exchange of experiences and best practices among countries with regards to the assessment process, reporting and communicating on the fourth national report and 2010 related themes. The project's intranet, when fully developed, will in turn serve to report on progress and status with regards to project implementation in real-time and on-line to the CBD Secretariat, the GEF, countries, and other interested partners, organizations and individuals.

Output 2.2. Project is duly monitored and evaluated through collaboration between UNDP and UNEP

Project monitoring will be regularly carried out by the UNDP and UNEP according the M&E Plan described in this project document. UNDP/GEF and UNEP, through their BD Enabling Activities (EA) focal points, will continue to share the responsibilities of project monitoring in close collaboration with the PSC. In addition, the two agencies will work together to solicit an independent evaluation at the end of Phase II. The TOR for the evaluation will be submitted to the PSC for review. At the country level, UNDP will engage Country Offices in monitoring implementation.

20. **Coordination with other related initiatives at global level.** UNDP and UNEP are committed together to ensuring the appropriate linkages with the cross-cutting National Capacity Self-Assessments which are being supported by both agencies in over 140 countries.

21. There are *inter alia* specific linkages to the following programmes / initiatives:

**Table 1. Expected role of project partners during implementation**

| Programme / Initiative   | Expected role   | Hyperlinks and other information                                |
|--|---|---|
| <b>UNEP's 2010 BIP Global Project - 2010 Biodiversity Indicators Partnership</b> | The GEF-financed project " <i>Building the Partnership to Track Progress at the Global Level in Achieving the 2010 Biodiversity Target, Phase I</i> " aims at assisting a wide range of agencies and organizations already working individually on the development and measurement of 2010 Targets indicators to collaborate more effectively to deliver a suite of global indicators that will be used for tracking and communicating progress towards 2010 at the global level and national. <sup>18</sup> The project's outputs include guidelines to promote and facilitate the development of 2010 biodiversity indicators at the national and regional levels, and to enhance the use of global biodiversity indicators in support of national and regional policy. These | <a href="http://www.twentyten.net">http://www.twentyten.net</a> |

<sup>17</sup> For example, the UNDP/GEF *Guide For Countries Preparing Third National Reports to the CBD*, published in 2005 in collaboration with the United Nations University (UNU) and the CBD Secretariat.

<sup>18</sup> The project was CEO Endorsed in May 2007. See <http://www.twentyten.net> for more information.

| Programme / Initiative                           | Expected role   | Hyperlinks and other information   |
|--|---|--|
|  | <p>guidelines are complementary to Towards 2010 Guidebook and other knowledge materials produced by and disseminated through this project. One member of the steering committee of the BIP2010 Global Project is part of the PSC with the aim of enhancing information exchange between the two projects and lessons learnt. In addition, there will be further value addition between the two projects in that institutions involved in the UNEP's BIP2010 Global Project may be invited to comment on the draft fourth national reports alongside the review that will be done by UNEP-GEF on fourth national reports.</p>  |  |
| <p><b>UNDP MDG Support Project</b></p>           | <p>The MDG Support Project aims at mobilizing technical and financial support from across UNDP and the UN System to help developing country governments achieve the Millennium Development Goals (MDGs). The MDGs incorporated recently the 2010 Biodiversity Targets as an additional target under goal number 7, adding the target of <i>“Reduc[ing] Biodiversity loss, achieving a significant reduction in the rate of loss by 2010”</i>.</p> <p>The contribution of this broad-based UNDP project to the Towards 2010 Biodiversity Targets National Assessment will be two-fold:</p> <ul style="list-style-type: none"> <li>(i) through the assistance provided to countries to develop and implement their MDG-based National Development Strategies for achieving the goals, inclusive of MDG 7 and the 2010 Biodiversity Target; and</li> <li>(ii) by developing and disseminating a set of MDG Needs Assessment Tools that allow policy makers to estimate the sectoral investments required to achieve the MDGs. Goal 7, inclusive of the 2010 Biodiversity Target, will be integrated across the set of Needs Assessment Tools (Water and Sanitation, Health, Infrastructure, Energy, etc) and investment requirements for the conservation and sustainable use of biodiversity will be evaluated exclusively with the Environment Needs Assessment Tool.</li> </ul> | <p><a href="http://www.unmillenniumproject.org">http://www.unmillenniumproject.org</a><br/> <a href="http://www.undp.org/poverty/mdgsupport.htm">http://www.undp.org/poverty/mdgsupport.htm</a><br/> Project co-financier, supporting Phase I with \$275,500 and Phase II with \$275,000<br/> Total: \$550,000</p>           |
| <p><b>UNDP Global Biodiversity Programme</b></p> | <ul style="list-style-type: none"> <li>▪ The Programme assists developing countries and communities to influence national and global policies, benefit from knowledge on biodiversity, and advance their sustainable development and poverty reduction goals. At the level of international environmental policy, the programme has been instrumental in bringing the 2010-challenges to the attention of the international community and country governments (e.g. through the London 2003 meeting, during COPs and other important biodiversity-related events).</li> <li>▪ Furthermore, collaboration between the programme and Towards 2010 can include: (i) integrating biodiversity and Convention on Biological Diversity (CBD) targets into global development planning (alignment of the CBD 2010 target and the MDGs), particularly through the MDG Support Project; (ii)</li> </ul>  | <p><a href="http://www.undp.org/biodiversity/">http://www.undp.org/biodiversity/</a><br/> <a href="http://www.undp.org/biodiversity/programmes.html">http://www.undp.org/biodiversity/programmes.html</a><br/> Project co-financier, supporting Phase I with \$257,000 and Phase II with \$257,000<br/> Total: \$515,000</p> |

| Programme / Initiative  | Expected role  | Hyperlinks and other information  |
|---|--|---|
|   | <p>identifying, articulating and communicating examples of best practice in biodiversity conservation and poverty reduction; and (iii) mainstreaming biodiversity into internal UNDP programming.</p>  |   |
| <p><b>Convention on Biological Diversity</b></p>                          | <p>The CBD Sec continues to facilitate the process of submission of <i>fourth national report</i> to the COP by its Parties by making available substantive guidance, such as the annotated guidelines to the fourth national report (known as the “4NR Reference Manual”<sup>19</sup>) and other guidance materials. The CBD Secretariat is also supporting the project by hosting, within the CHM Websites, the 4NR Portal. Key staff within the CBD Secretariat have also contributed substantially to the ‘Towards 2010 Guidebook’, as well as its dissemination, e.g. through a side-event held at the CBD COP9 in Bonn (May 2008). In addition, the Secretariat is leading the preparation of the third edition of the <i>Global Biodiversity Outlook</i> and its byproducts with partner institutions, a CBD signature publication that draw on inputs from country’s submission of their fourth national reports to the CBD COP.</p> <p>In addition, the following has been the role played by the CBD Sec in supporting the project:</p> <ul style="list-style-type: none"> <li>▪ Development of tools such as a reference manual and a sample report to assist with the preparation of the fourth national report.</li> <li>▪ Development and operation of an on-line reporting facility to respond to requests and queries concerning the preparation of the fourth national reports.</li> <li>▪ Organize workshops or side events in connection with major CBD meetings to strengthen countries’ capacities to undertake national assessments and to prepare the fourth national reports.</li> <li>▪ Facilitate the provision of technical assistance to some countries for carrying out national assessments and preparing the 4NR, as requested.</li> <li>▪ Assist with development and maintenance of a portal on the CBD website dedicated to the implementation of MSP.</li> <li>▪ Assist with development of a guide for national assessment of progress towards the 2010 Biodiversity Target.</li> <li>▪ Assist UNEP in reviewing draft fourth national reports prepared by LDCs and SIDCs as requested.</li> <li>▪ Assist with monitoring the implementation of the MSP and facilitate where necessary.</li> </ul> | <p><a href="http://www.cbd.int/2010-target/default.shtml">http://www.cbd.int/2010-target/default.shtml</a><br/> <a href="http://www.cbd.int/reports/default.shtml">http://www.cbd.int/reports/default.shtml</a></p> |
| <p><b>The BINU Project - Biodiversity Indicators for National Use</b></p> | <ul style="list-style-type: none"> <li>▪ Although the BINU project concluded its implementation in 2005, its knowledge products, lessons and recommendations are being actively used in this project, e.g. with the issue of scope. For many countries it may be possible to advance with defining national indicators vis-à-vis the 2010 targets, but it will be only the initial work.</li> <li>▪ Else, the BINU project has shown that, in spite of many</li> </ul>   | <p><a href="http://sea.unep-wcmc.org/collaborations/BINU/index.cfm">http://sea.unep-wcmc.org/collaborations/BINU/index.cfm</a></p>  |

<sup>19</sup> [www.cbd.int/nr4/guidelines/manual.shtml](http://www.cbd.int/nr4/guidelines/manual.shtml)



| Programme / Initiative  | Expected role   | Hyperlinks and other information  |
|---|---|---|
|   | <p>data gaps, participating countries brought all the available data together to create an overall picture of the status of biodiversity within a certain ecosystem within their country.</p> <ul style="list-style-type: none"> <li>▪ For countries with a high responsibility for biodiversity conservation and limited financial means, additional work should be supported and carried out.</li> <li>▪ This project will be actively collecting data on additional 2010-work through the country requests.</li> </ul>   |   |
| <b>Countdown 2010</b>   | <p>Countdown 2010 is a global public-private partnership with more than 700 institutions committed to the 2010 biodiversity target and hosted by the International Union for Conservation of Nature (IUCN). This civil society initiative facilitates and encourages action, promotes the importance of the 2010 biodiversity target and assesses progress towards 2010. An Assembly of all partners meets annually to review the overall direction of Countdown 2010. In its implementation, Countdown 2010 is guided by a core Advisory Board and is a co-financier in this project. Activities at national level within the realm of this project in countries encompassed by the Countdown 2010 initiative will continue to be carried out in a coordinated manner. Most relevant for the collaboration in this project are the Countdown 2010 national platforms and its work in the relation to the Countdown 2010 Readiness Assessment. The Countdown 2010 Readiness Assessment focuses on policy response of countries and proposes a conceptual framework for assessing progress towards the 2010 biodiversity target and for ensuring greater synergy among the biodiversity commitments. The methodology identifies key-policy areas that need to be looked into while assessing progress towards the 2010 biodiversity target at the national level. It further provides an indicative list of questions that may be used while assessing progress towards the 2010 target through a stakeholder consultation process. The Countdown 2010 assessment builds on the TEMATEA project<sup>20</sup> which is housed within the Countdown 2010 Secretariat. TEMATEA provides countries with a logical, issue-based framework that structures negotiated text to facilitate the coherent implementation of biodiversity-related commitments, taken under different agreements, such as CBD, UNFCCC and UNCCD but also the relevant regional agreements.</p> | <p><a href="http://www.countdown2010.net/">http://www.countdown2010.net/</a><br/> Project co-financier, supporting<br/> Phase I with \$220,450<br/> Phase II with \$179,550<br/> Total: \$400,000</p> |
| <b>Global Biodiversity Information Facility and the Ark 2010 Initiative</b> | <ul style="list-style-type: none"> <li>▪ The Facility and its Ark 2010 initiative may be able to assist countries in organizing, storing and systematizing 2010-related data and information.</li> <li>▪ The Ark 2010 Programme is aimed at the development of new computational tools that enable scientists, citizens and governments to: (1) better acquire and use data on biodiversity, (2) better understand the complex interactions of biodiversity that forms the Earth's life-support system, and (3) devise effective solutions to halt the loss of this biodiversity and protect our entire life-support system.</li> </ul>   | <p><a href="http://www.gbif.org/">http://www.gbif.org/</a><br/> <a href="http://wiki.gbif.org/ark2010/">http://wiki.gbif.org/ark2010/</a></p>   |

<sup>20</sup> [www.tematea.org](http://www.tematea.org)



| Programme / Initiative   | Expected role  | Hyperlinks and other information  |
|--|--|---|
| <b>World Commission on Protected Areas (WCPA)</b>                    | <ul style="list-style-type: none"> <li>▪ Allow countries to obtain and systematize their national information on protected areas.</li> <li>▪ Given that coverage of protected areas is a key 2010 indicator, and the WCPA database provides authoritative information on protected areas, their role as repository of country's updated information is important.</li> </ul>   | <a href="http://www.iucn.org/themes/wcpa/">http://www.iucn.org/themes/wcpa/</a>   |
| <b>SEBI2010 - Streamlining European 2010 Biodiversity Indicators</b> | <ul style="list-style-type: none"> <li>▪ The SEB2010 is and it is A Pan European initiative and part of the EU's CHM. Launched in 2004, its aim is to develop a European set of biodiversity indicators to assess and inform about progress towards the European 2010 targets.</li> <li>▪ Although EU countries are obviously not benefiting from funding under this project<sup>21</sup>, knowledge materials are being produced and SEB2010 is also working at the wider regional level (i.e. involving non-EU, Eastern European and Commonwealth of Independent States countries).</li> </ul> | <a href="http://biodiversity-chm.eea.eu.int/information/indicator/F1090245995">http://biodiversity-chm.eea.eu.int/information/indicator/F1090245995</a> |

22. **At the national level**, the project will continue to support eligible countries with a wide consultation process aimed at: (1) disseminating the importance of 2010 Targets for the progressive implementation of the CBD at country level, particularly as reported by CBD Parties through the submission of the fourth national report to the COP; and (2) linking, where relevant, reporting on progress towards the 2010 target with progress in achieving other related global goals such as Millennium Development Goals.

23. Planned activities at country will be reflected in the individual country requests and are expected to include (a) data gathering relevant for the 2010 Targets; (b) consultations with stakeholders; and (c) reporting and communicating on progress towards 2010 Targets, using the format of the fourth national report to the CBD COP, and other associated reports or products. It is expected that the gathering of data and information related to 2010 national indicators will build upon on previous activities, studies, experiences, including NBSAPs and earlier National and Thematic Reports to the CBD. The preparation process also foresees extensive consultation with the full range of national stakeholders, including local and indigenous groups, in order to ensure that different perspectives and interests are taken into account.

24. For the continued development of the 4NR Portal, UNEP has engaged two consultants to work with the CBD website team based in Montreal, Canada. These consultants are supervised by UNEP Task Manager and the CBD officer in charge of national reporting in collaboration with UNDP/GEF. For the ease of administration, this activity is financed from the project's Phase I budget.

25. For reviewing the quality of the fourth national report and/or national assessments for biodiversity 2010 targets from the LDCs and SIDs, UNEP will count on the assistance from a global institution with regional presence to the reviews, rather than engaging different independent consultants for the purpose.<sup>22</sup> This is a slight deviation from the implementation modality proposed for this activity under Phase I and it was considered more cost-effective. More importantly, this modality will allow for consistency and comparability of the reviews. For the ease of administration, this activity is being financed from the project's Phase I budget.

26. **Project risks and risk management measures.** Experience from the Third National Report Umbrella Projects (both UNDP's and UNEP's) showed that many countries have been rather slow in preparing and remitting country requests. Often requests were incomplete or contained inconsistent text. The review of several

<sup>21</sup> Although there are letters of endorsement for Estonia, Hungary and Slovakia on file, requests from these countries will not be considered, due to their EU ascension status, making them currently ineligible to GEF biodiversity funding.

<sup>22</sup> See Appendix 1b, Annex E-10 for the TORs for reports' review.

requests also showed that many countries missed the opportunity to truly involve civil society in consultations. The following measures will be taken to mitigate these risks:

- Country requests will be accepted in English, French and Spanish;
- Country requests contain more guidance on their preparation; and
- Information on operational procedures and substantive guidance will be prepared as a priority activity and made available in English, French and Spanish.

27. Delays in the approval of Phase II proposal resulted in delays of 2-4 months in the approval of at least 18 country proposals<sup>23</sup>. While the proposal for this project's Phase II could theoretically have been submitted earlier in order to ensure a seamless transition between both phases, this strategy to avoid delays may not have produced the desired results. The condition normally imposed by the GEF for the approval of phased projects is that at least 90% of the funds from the first phase must be committed (if not spent) before a request for the subsequent phase can be submitted. In light of this rule, submission of Phase II was therefore not possible before mid-July 2008, when actually \$885,000 (or 89% of funds) were effectively committed. The Phase II MSP was submitted on 04 Aug 2008 showing those figures.

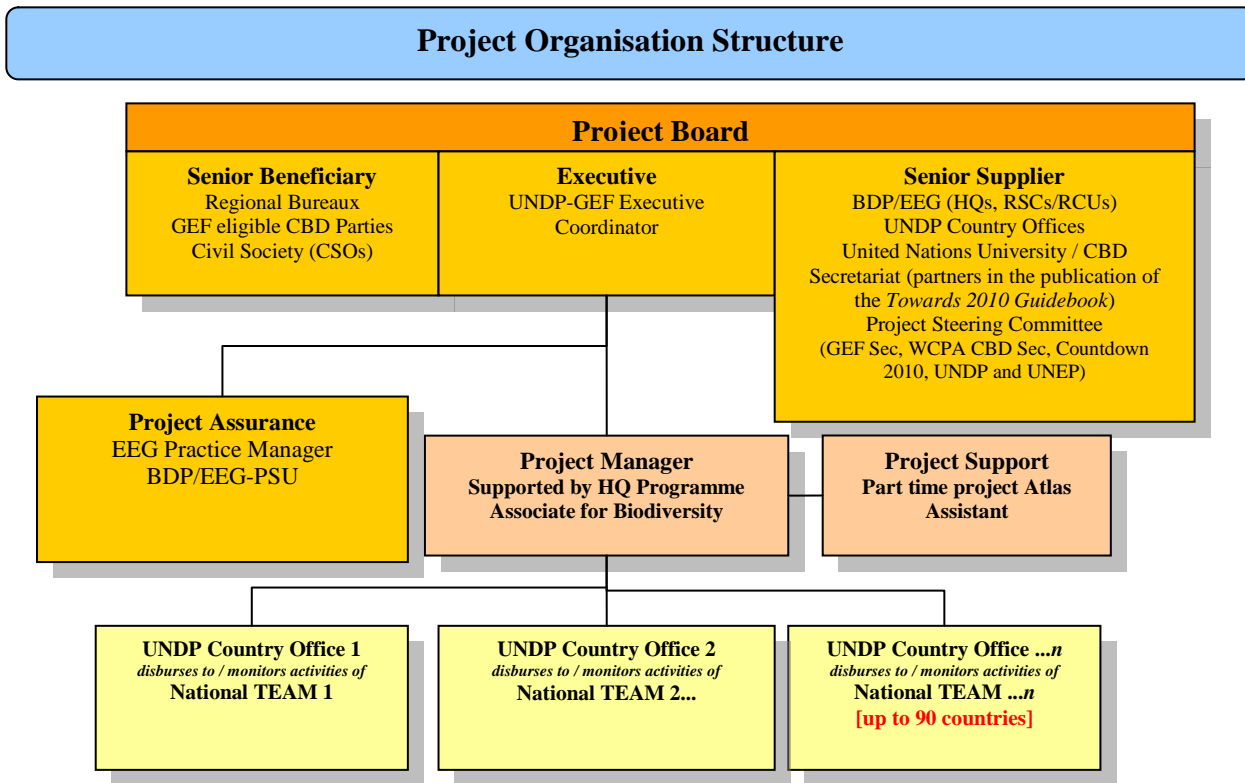
28. The strategy to avoid further delays (given that obtaining DEX clearance under Phase I was a rather lengthy process<sup>24</sup>), is therefore not to treat the second approved MSP (i.e. Phase II) as a separate and discrete project requiring a stand-alone PRODOC. Rather, the internal UNDP approval of Phase II will be done through a substantive revision of the existing PRODOC (i.e. this document). It is important to note that the GEF Trustee has provided its green light for treating Phase II as a substantive revision.

---

<sup>23</sup> Due to these delays, it may not be possible to maintain the proposed 31-day dwell time (i.e. the time between the receipt of an eligible proposal and funds authorization) for those 18 countries (and possibly a few more).

<sup>24</sup> See Section IV, Part I-1.

## PART III: MANAGEMENT ARRANGEMENTS



29. The management arrangements described in the eight paragraphs below have been successfully adopted for the implementation of Phase I and have been approved through the DEX clearance that this project has received. With the exception of a minor adjustment with respect to the composition of the Project Steering Committee, there are no changes in these arrangements for the implementation of Phase II and the eight paragraphs that follow have therefore not been revised.

30. The project will be managed by UNDP/GEF (lead) and UNEP (partner agency) through the designated focal points for the project, who are expected to work together towards to fulfillment of the project's objectives. The specific arrangement for each agency and the budgets that each will manage are outlined through their respective project documents (PRODOC). Else, the internal division of responsibilities between UNDP and UNEP are represented in the table below and is based on the agencies' respective comparative advantage and on the sequence of steps, which start with the preparation of the country request and end by the completion and submission of the fourth national report to the CBD.

**Table 2. Table of Responsibilities**

|     |  | Country  | UNDP<br>Country<br>Offices | UNDP<br>HQ | UNEP       |
|-----|--|----------|----------------------------|------------|------------|
| 1.  | Guidelines and FAQs  |          |                            | <b>X</b>   | <b>(x)</b> |
| 2.  | Developing and updating of the additional webpages within the CBD CHM dedicated to the 2010 Targets National Assessment Website, including the intranet for data sharing, networking, sharing of experiences between countries and reporting on progress |          |                            | <b>(x)</b> | <b>X</b>   |
| 3.  | Country request and RAF compliant Endorsement prepared   | <b>X</b> |                            |            |            |
| 4.  | Review and interaction with country partners to make proposals eligible  |          | <b>X</b>                   | <b>X</b>   |            |
| 5.  | Approval of country requests   |          |                            | <b>X</b>   |            |
| 6.  | Issuance of Framework Service Agreement (FSA) authorization to utilize and release of funds  |          |                            | <b>X</b>   |            |
| 7.  | Disbursement of Funds (entry into Atlas)   |          | <b>X</b>                   |            |            |
| 8.  | Implementation at country level (consultations, preparation of report)   | <b>X</b> |                            |            |            |
| 9.  | Monitoring of implementation at country level until the report is ready  |          | <b>X</b>                   |            |            |
| 10. | Review and analysis of draft countries' fourth national report as per demand (with a special focus on countries' understanding of scientific and technical issues).  |          |                            |            | <b>X</b>   |
| 11. | Submission of fourth national report to CBD Secretariat and dissemination of other products from the projects.   | <b>X</b> |                            |            |            |
| 12. | Financial Reporting to GEF Secretariat   |          |                            | <b>X</b>   | <b>X</b>   |
| 13. | Project Evaluation (to be carried out in phase II)   |          |                            | <b>X</b>   | <b>X</b>   |

31. Key players in project implementation are the countries themselves, the UNDP Country Offices, the UNDP/GEF Regional Coordination Units (RCUs) and UNDP, UNEP Headquarters, UNEP Regional Offices. The CBD Secretariat and Countdown 2010 will support project implementation as partners. The development and updating of the additional Towards 2010 Biodiversity Targets webpages will be done in collaboration and coordination with the CBD Secretariat. The international civil society initiative Countdown 2010 operates in several countries, where the activities of the project can benefit from joint planning and implementation.

32. The funding destined to countries under this umbrella project will be approved by UNDP upon receipt by the UNDP/GEF Unit of a satisfactory proposal from the country accompanied by a letter of request issued by the Operational Focal Point of that country. The format for individual country requests is attached in the CBD Website <http://www.cbd.int/reports/financial.shtml> in English, French and Spanish. UNDP Country Offices will disburse funds to countries' implementing partners based on careful assessment of their technical capacities, needs, costs and institutional commitments. Grants will be provided to requesting countries in line with UN audit rules and procedures. UNDP, in collaboration with UNEP will provide on a periodic basis overall reporting to the GEF Secretariat on the status of the global project and the number of country requests received and processed, as well as funds disbursed. An intranet to be established for this project will serve primarily the purpose of sharing information among relevant partners and facilitating coordination and collaboration among them.

33. **For the activities implemented by UNDP, the agency's rules and procedures for direct execution (DEX) will apply.** This modality was considered as the most flexible and effective mechanism based on (a) the short time frame until 2010; (b) the small size of individual country requests (not exceeding \$20,000 per country) and (c) the large number of countries to be assisted under this project (42 countries in Phase I and up to 90 countries in the first two phases).

- Since the Global project will be implemented under the DEX modality, at the country level as well COs would also need to use DEX. It will not be possible to use NEX at the CO level

for execution as doing so would require separate NEX projects to be created in Atlas by COs under the DEX global project. Entering the funds in Atlas as NEX projects at the CO level would create complications as the grants (\$20,000 only) would be treated as a project instead of an Activity in Atlas. If there should be any cases where countries raise objections to DEX procedures and prefer the flexibility of NEX, it is recommended that the entire grant amount be sub-contracted by the CO to the relevant lead National Agency. A sub-contract would allow government agencies the same flexibility for managing funds as under an individual NEX project.

- Overall implementation will be supported by UNDP/BDP/EEG/BD staff. Overall execution will be managed by UNDP/BDP/EEG-BD/GEF Biodiversity staff with support from GEF Programme Operations Support Unit staff. Implementation support services will be treated as direct project costs unequivocally linked to its implementation. These direct costs will be charged directly to the project on actual cost basis by the UNDP unit that provides the services.
- Specific responsibilities for management at various levels are described below.
  - a. UNDP/EEG-BD / Project Management Unit will be responsible for:
    - i. Technical and financial approval of respective country 6-12 page requests for funding entitled “Proposals for carrying out 2010 Biodiversity Targets National Assessments: GEF Additional Funding for Biodiversity Enabling Activities” (“proposal”);
    - ii. For each approved proposal, HQ will establish a separate Atlas Activity in the form of a grant, and will provide authorization to the respective UNDP/Country Office (CO) for the corresponding Chart of Accounts to be charged. This authorization will be regarded as the framework service agreement (FSA) between UNDP/EEG-BD, the CO and the respective Government to incur expenditures. (Please refer to draft FSA attached in Appendix 5 of this document);
    - iii. EEG-BD will be responsible for overall financial and budgetary oversight to ensure there is no over-expenditure, and track budget revisions and financial and operational completion of the project.
    - iv. EEG-BD will review final reports but is not accountable for the quality and content.
  - b. UNDP/EEG Finance & Admin. Unit will be responsible for execution oversight, ensuring issuance of ASL (Authorized Spending Limit).
  - c. UNDP/CO (Country Office), in accordance with the FSA, will be responsible for:
    - i. specific approval of grant expenditures in Atlas in line with the approved proposal including its financial ceiling;
    - ii. issuing payment to respective government responsible for preparation of Fourth National Report on Biodiversity;
    - iii. Ensure quality and effective delivery of the Fourth National Report on Biodiversity to the CBD and HQ;
    - iv. Management of respective project activity including confirmation to HQ regarding operational and financial completion of the activity, using the sign-off form on the completion of activities at country level (see Appendix 1, Annex E-5)
  - d. Respective Government – in accordance with the FSA, the Government body recipient of grant funding will:
    - i. operationalize the activities in accordance with the approved proposal;
    - ii. report expenditures to CO, including financial and operational completion.
    - iii. Ensure technical quality and timely completion, submission to CO, HQ and CBD of the Fourth National Report to the CBD.

34. **For the activities implemented by UNEP**, the applicable implementation arrangements have been described in the CEO approved MSP for Phase I (Appendix 1 to this PRODOC), PART III “*Institutional Coordination And Support*”.

35. UNDP and UNEP have provided no objection to each other’s mirror project documents, dispensing hereby the need for Memorandum of Understanding between the two agencies.

36. In order to oversee the successful and coordinated implementation of the project, a Project Steering Committee (PSC) has been created with the following institutional membership: GEF Secretariat, UNDP/GEF; UNEP/GEF; MDG Support Programme; the CBD Secretariat; the Countdown 2010 Initiative; and the Coordination of the BIP2010 project. The participation of a representative from the World Commission on Protected Areas (WCPA) in the committee was added after the first meeting. The chairmanship of the PSC is rotational and the PSC Secretariat will be assured by one of its members appointed also on a rotational basis. The committee will meet virtually or face to face, whenever possible during international events.

37. In order to accord proper acknowledgement to the GEF for providing funding, a GEF logo should appear on all relevant GEF project publications and the website, including among others, project hardware and vehicles purchased with GEF funds. Any citation on publications regarding projects funded by GEF should also accord proper acknowledgment to GEF. The UNDP logo and the UNEP logo should be more prominent -- and separated from the GEF logo if possible. The logos of partners of this project will also appear, upon request, on related publications of this project, if these partners contribute to these publications.

38. Overall implementation will be supported by UNDP/GEF and UNEP/GEF staff. Implementation support services will be treated as direct project costs unequivocally linked to its implementation. These direct costs will be charged directly to the project on actual cost basis by the respective UNDP and UNEP units that provides the services.

#### **PART IV: MONITORING AND EVALUATION PLAN AND BUDGET**

39. UNDP and UNEP, in partnership with the Convention on Biodiversity and other members of the Project Steering Committee, are already working together for monitoring and evaluating the project, its activities both at the country and at the global levels, as well as its results and impact. Given the umbrella approach, the project has a global-level component and a series of country-level activities, considered ‘sub-projects’ under a national component. Monitoring of the project at the country level is exerted by UNDP Country Offices and at the global level by both UNDP and UNEP. Strategic oversight is provided by the Project Steering Committee (PSC). Evaluation will be in line with the GEF’s, UNDP’s and UNEP’s policies and will be independent from implementation, covering both at the global and at the national components, the latter probably on a sample basis.

40. There had been three meetings of the PSC. The first meeting was held in Paris on 07 July 2007 at the margins of the Second meeting of the CBD’s Working Group on Review of Implementation of the Convention (WGRI-2). The Second PSC meeting was a teleconference held on 26 November 2007. The third PSC meeting was held at the margins of the CBD COP9, in Bonn with some members connecting over teleconference. For all meetings, minutes were prepared and circulated to PSC members. Because the PSC meets either through teleconferences or at the margin of international meetings or conferences, associated costs of holding PSC meetings are negligible for the project.

41. The PSC has been actively playing its oversight and monitoring role as follows: (a) overseeing the coordinated implementation of the project by providing guidance and substantive advice to implementing agencies (a role mostly played by the CBD Secretariat, with respect to relevant COP guidance); (b) appraising important documents and products produced by the project (e.g. the exchanges among PSC members in

connection with the recent UNDP publication ‘Towards 2010 Guidebook’<sup>25</sup> or in connection with the **4NR Web Portal**); and (c) proposing and agreeing on modalities of collaboration among project partners, either at the global or at the country levels (e.g. between Countdown 2010 and UNDP on possible implementation role in certain Enabling Activities projects). The PSC will continue to meet and be in contact with regards to project implementation as needed during Phase II.

42. The project’s web-based platform, the ‘**4NR Portal**’ ([www.cbd.int/nr4](http://www.cbd.int/nr4)) was launched in May 2008 and includes an overview of approved country requests and status of project implementation. The Portal allows project partners and others interested to monitor project development more closely. The Portal is undergoing further development and will include in the near future an intranet and other features aimed at sharing information in real time among the project’s internal partners, i.e. UNDP, UNEP, the CBD Secretariat, the GEF Secretariat and Countdown 2010.

43. Under Phase I, UNDP/GEF has been reviewing individual country proposals and awarding funding to countries upon receipt of eligible and OFP-endorsed proposals. These proposals contain an outline of the activities to be carried out, outputs to be achieved, time-frame and budget allowing for a closer monitoring by UNDP Country Offices. Funds are disbursed to governments through UNDP Country Offices which are responsible for monitoring project progress at the country level as per individual country proposals. When activities at the country level are finished, generally culminating with the submission of the fourth national report to the CBD COP, the Environment Focal Point in the UNDP Country Office and the CBD National Focal Point in the government sign-off on a sheet asserting the completion of the sub-project and submit this to UNDP Headquarters. The submission of fourth national reports by countries can be independently verifies through the posting of reports in the CBD Website. UNDP Country Offices will disburse funds to countries’ implementing partners (i.e. the executing agency at the national level) based on a careful assessment of their technical capacity, needs, costs and institutional commitments, as it has been the case under Phase I. In addition, grants are provided to requesting countries in line with UN audit rules and procedures. Eligibility criteria for the proposal and of individual budget items is clearly stated in the request format (see Annex E-5). The format will not change in Phase II, allowing for a smooth transition from the first phase to the second. This arrangement for monitoring the project at the national level has been giving good results with minimal costs to the project. Costs of monitoring the project at the national level are factored in into UNDP’s fee. The herein described modality of implementation for the national component is expected to continue unchanged in Phase II.

44. In terms of project outputs, for LDC and SIDS, UNEP may be requested to review national reports produced with regards to their technical and scientific aspects in an effort to improve the quality of reports submitted to the CBD. Until the submission date of this proposal, no requests have been forthcoming to UNEP due to the initial stage of implementation of most national sub-projects.

45. In accordance with standard UNDP’s and UNEP’s M&E procedures for GEF projects, the project will be evaluated at the end of the implementation of Phase II, where lessons, experiences and the impact of the project will be independently assessed. Due to the umbrella nature of the project, where 90% of the budget is composed of grants and its phased implementation, no Mid-Term Evaluation will be carried out.

**Table 3. Monitoring Costs in Phases I and II**

|   |                                       |
|---|---------------------------------------|
| UNDP project oversight at global level                          | Out of IA’s fees                      |
| UNEP project oversight at global level                          | Out of IA’s fees                      |
| UNDP Country Offices’ project monitoring at country level       | Implementation Support Services (ISS) |
| Project Intranet  | Approx. \$20,000                      |
| Project monitoring by members of the Project Steering Committee | With partner managed funds            |

<sup>25</sup> UNDP (2008): *Towards 2010 - A guide for setting 2010 national biodiversity targets and for preparation of the fourth national report to the Convention on Biodiversity*, published in collaboration with the UN University Institute of Advanced Studies and the CBD Secretariat.

|                            |  |
|----------------------------|--|
| Project's Final Evaluation | \$40,000<br>(shared equally between UNDP and UNEP) |
|----------------------------|--|

46. Also, due to the specific umbrella nature of this project and the fact that reporting will be done in real time through the project's intranet, Project Implementation Reports (PIRs) will not be produced. A final project report will be produced jointly by UNDP and UNEP upon project closure and after the conclusion of the final evaluation report.

47. **Audit Clause:** Standard DEX audit procedures will be applied.

## PART V: LEGAL CONTEXT

48. Government of (country) and UNDP, signed on (date).

Consistent with the Article III of the Standard Basic Assistance Agreement, the responsibility for the safety and security of the executing agency and its personnel and property, and of UNDP's property in the executing agency's custody, rests with the executing agency.

The executing agency shall:

- a) put in place an appropriate security plan and maintain the security plan, taking into account the security situation in the country where the project is being carried;
- b) assume all risks and liabilities related to the executing agency's security, and the full implementation of the security plan.

UNDP reserves the right to verify whether such a plan is in place, and to suggest modifications to the plan when necessary. Failure to maintain and implement an appropriate security plan as required hereunder shall be deemed a breach of this agreement.

The executing agency agrees to undertake all reasonable efforts to ensure that none of the UNDP funds received pursuant to the Project Document are used to provide support to individuals or entities associated with terrorism and that the recipients of any amounts provided by UNDP hereunder do not appear on the list maintained by the Security Council Committee established pursuant to resolution 1267 (1999). The list can be accessed via <http://www.un.org/Docs/sc/committees/1267/1267ListEng.htm>. This provision must be included in all sub-contracts or sub-agreements entered into under this Project Document.

49. The UNDP GEF Executive Coordinator, Bureau for Development Policy is authorized to effect in writing the following types of revision to this Project Document, provided that he/she has verified the agreement of the project focal point in UNDP Environment and Energy Group and is assured that the other signatories to the Project Document have no objection to the proposed changes:

- a) Revision of, or addition to, any of the annexes to the Project Document;
- b) Revisions which do not involve significant changes in the immediate objectives, outputs or activities of the project, but are caused by the rearrangement of the inputs already agreed to or by cost increases due to inflation;
- c) Mandatory annual revisions which re-phase the delivery of agreed project inputs or increased expert or other costs due to inflation or take into account agency expenditure flexibility; and
- d) Inclusion of additional annexes and attachments only as set out here in this Project Document

With respect to country-level activities, revisions to be carried out by the UNDP Resident Representative are restricted to those described in the duly signed Delegation of Authority (a.k.a. "Framework Service Agreement") issued for the effect of approving such activities.



## SECTION II: STRATEGIC RESULTS FRAMEWORK

### PART I: LOGICAL FRAMEWORK ANALYSIS

**Table 4. Indicators, targets, means of verification and assumptions for the ‘Towards 2010 Targets MSP - Phases I and II**

| Objectives / Outcomes  | Indicators   | Targets  | Means of verification  |
|--|--|--|--|
| <p><b>Goals:</b> Contribution to improved decision-making for the conservation of global biodiversity; and</p> <p>Contribution to the assessment of key indicators identified in the GEF Focal Area Strategy for Biodiversity</p> <p><b>Objective:</b> Enable GEF eligible CBD parties to assess progress towards the achievement of the 2010 Biodiversity Targets at national level through a country-wide, stakeholder consultation process and to appropriately report and communicate on it.</p> | <p><b>Impact Indicator 1:</b> Information and data from GEF eligible countries on achievement of 2010 targets at national level is made available to the CBD through the fourth national report to the CBD in a timely manner for COP decision-making and the preparation of the third edition of the Global Biodiversity Outlook and for the impact assessment of GEF projects.</p> | <p>At least 60% of participating countries complete their fourth national report to the CBD on time (i.e. before the deadline of March 30, 2009) and 100% of participating countries submit their fourth national report of the CBD before project end.</p> <p>GEF projects adopt the results of the 2010 Targets Assessment in the monitoring and evaluation of their impact.</p> | <ul style="list-style-type: none"> <li>▪ As per information provided by the CBD Secretariat.</li> <li>▪ Comparison of sample third and fourth national reports from assisted countries (to be carried out in connection with independent evaluation)</li> <li>▪ Information on key indicators on the cover page of new GEF projects approved from 2008 on (particularly in the Biodiversity focal area) involving countries that had access to funding under this umbrella project.</li> </ul> |
|  | <p><b>Impact Indicator 2:</b> Biodiversity perspective and fulfillment of 2010 Targets integrated into the MDG policy dialogue at national level.</p>  | <p>By 2010, at least 40 developing countries have explicitly incorporated the achievement of the 2010 Biodiversity Targets in their efforts to achieve MDGs.</p>   |  |
| <p><b>Outcome 1)</b> Countries supported financially and substantively with their 2010 Biodiversity Targets National Assessments and the production of the fourth national report and other associated reports in a timely and expedited manner.</p>   | <p>1.1. Number of countries assisted vis à vis targets established for both phases</p>   | <p>A minimum of 40 countries assisted under Phase I.<br/>A minimum of 44 countries assisted under Phase II.</p>  | <ul style="list-style-type: none"> <li>▪ Queries to the 2010 Targets database</li> <li>▪ Sign-off on activity completion by UNDP Country Representative and CBD focal point</li> <li>▪ 2010 Biodiversity Targets National Assessment Website</li> <li>▪ CBD Website</li> </ul>   |
|  | <p>1.2. Average dwell time in processing country requests from receipt of eligible request till their approval.</p>  | <p>Average of 31.5 days maintained.<br/>Dwell time should not exceed 2 months under normal circumstances (see Assumption 1).</p>   |  |
|  | <p>1.3. Review of fourth national reports for LDCs and SIDS successfully provided.</p>   | <p>Min. 8 reports satisfactorily reviewed as per demand (see Assumption 2)</p>   |  |
| <p><b>Outcome 2)</b> Monitoring, Learning, Adaptive Feedback &amp; Evaluation</p>  | <p>2.1. “Guide to Countries Assessing Progress Towards 2010 Biodiversity Targets” completed and disseminated.</p>  | <p>Towards 2010 Guidebook disseminated among all CBD Parties.</p>  | <ul style="list-style-type: none"> <li>▪ CBD Website</li> <li>▪ Content and appearance of the ‘2010 Biodiversity Targets National Assessment’ webpages</li> <li>▪ User surveys tbd.</li> <li>▪ Project Evaluation Report</li> </ul>  |
|  | <p>2.2. Content for the CHM webpages for the ‘4NR Portal’ updated and improved as per project workplan.</p>  | <p>4NR Portal fully developed.</p>   |  |

### Assumptions

1. Experience from the Phase II of UNDP's 'Third National Reports Umbrella MSP' showed that the *average dwell time* in processing country requests under normal circumstances is of 31.5 days (min. 5 days and max. 64 days), i.e. from the receipt of a complete and eligible proposal (including endorsement letter) to the issuance of the Framework Service Agreement authorization (FSA) to the UNDP Country Office for releasing the funds. Under exceptional circumstances (ineligible country requests requiring extensive commenting and revisions, missing OFP letters, etc.), dwell time may be longer.

Experience from this project's Phase I implementation has shown that the average dwell time of 31.5 (week) days can be maintained under normal circumstances. Phase II will have a higher average dwell time than Phase I due to delays already registered between July and November (waiting for Phase II approval and operationalisation). If these are to be considered unusual circumstances, the dwell time of 31.5 days can be maintained during Phase II.

2. It is assumed that not all LDC and/or SIDS will require their fourth national report reviewed for quality. There are 65 LDCs and/or SIDS in the list of target countries for phase I, of which 25 will indicatively be targeted for funding during Phase I. (Appendix 1, Annex E-3).

Experience from Phase I has shown that the interest for reports review is far from what has been estimated. The PSC may need to guide the project on the use of the funds entrusted to UNEP for the purpose.

**Table 5. Project Logframe (both Phases)**

|   |   |  |  |
|---|---|--|--|
| <b>Objective: Enable GEF eligible CBD parties to assess progress towards the achievement of the 2010 Biodiversity Targets at national level through a country-wide, stakeholder consultation process and to appropriately report and communicate on it.</b> |   |  |  |
| <b>Outcome 1) Countries supported financially and substantively with their 2010 Biodiversity Targets National Assessments and the production of the fourth national report and other associated reports in a timely and expedited manner.</b>               |   |  |  |
| <b>Key Output under Phase I and II) Financial and substantive support provided to 90 countries for carrying out their 2010 Targets Biodiversity National Assessment.</b>  |   |  |  |
|   | <i>Activities at global and country levels for each country</i>   | <i>Timeframe</i>                       | <i>Responsible Party</i>   |
| 1.1   | First draft country request prepared by country partners / RAF compliant endorsement letter provided  | country specific                       | Country Government   |
| 1.2   | CO clears request and remits it to the concerned UNDP/GEF RCU for further clearance / or comments provided, re-drafting                                       | 30 days<br>(ideal dwell time)          | UNDP Country Office  |
| 1.3   | Approval of country requests by UNDP EEG-BD / or comments provided, re-drafting   |  | UNDP/EEG-BD in collaboration with UNDP/EEG Regional Coord. Units |
| 1.4   | FSA authorisation issued by UNDP/EEG-BD and remitted to concerned RCU, which in turn remits to CO   |  | UNDP/EEG-BD  |
| 1.5   | CO records obligations and expenditures into Atlas and disburses funds as per instructions in FSA   | max. 1 week after receipt of FSA       | UNDP Country Office  |
| 1.6   | First disbursement to countries   | country specific                       | UNDP Country Office  |
| 1.7   | Implementation of country activities (as described in individual country requests)  | country specific                       | Country Government   |
| 1.8   | Review of fourth national reports from LDCs and/or SIDS as per demand   | 30 days (max. dwell time)              | UNEP   |
| 1.9   | Submission of fourth national report to the CBD   | shortly after report is ready          | Country Government   |
| 1.10  | Production and dissemination of other products of the project (publications, action plans, proposals etc)   | <i>optional and country specific</i>   | Country Government   |
| 1.11  | Signing off on activity completion by CO and CBD Focal Point  | max. 2 weeks after activity completion | UNDP Country Office  |
| <b>Outcome 2) Monitoring, Learning, Adaptive Feedback &amp; Evaluation</b>  |   |  |  |
| <b>Output 2.1) Guidance material is available to assist countries and Website for information exchange and network on 2010 Targets Biodiversity National Assessment is developed and constantly updated.</b>  |   |  |  |
|   | <i>Activities at global level</i>   | <i>Timeframe</i>                       | <i>Responsible Party</i>   |
| 2.1.1   | Preparation and dissemination of the “Guide to Countries Assessing Progress Towards 2010 Biodiversity Targets”  | completed 3 months after project start | UNDP/EEG-BD with partners  |
| 2.1.2   | 4NR Portal (including intranet) created and fully developed within the CHM sites for assisting countries with their 2010 assessments / fourth national report | Throughout implementation              | UNEP with partners   |
| 2.1.3   | 4NR Portal constantly updated   | Throughout implementation              | UNEP with partners   |
| <b>Output 2.2) Project is duly monitored and evaluated through collaboration between UNDP and UNEP</b>  |   |  |  |
|   | <i>Activities at global level</i>   | <i>Timeframe</i>                       | <i>Responsible Party</i>   |
| 2.2.1   | Operational and substantive inputs provided to project partners (GEF Sec, CBD Sec, countries, Countdown 2010, etc., as applicable)                            | Throughout implementation              | UNDP and UNEP  |
| 2.2.2   | Reporting on project progress provided to project partners  | Throughout implementation              | UNDP and UNEP  |
| 2.2.3   | Project meetings held, including PSC, stakeholder meetings organised by CBD Secretariat and COPs  | Throughout implementation              | UNDP, UNEP and other members of the PSC                          |
| 2.2.3   | Project is independently evaluated  | After COP10                            | UNDP and UNEP  |

### SECTION III: TOTAL BUDGET AND WORKPLAN

50. The overview of the project's finance, including both UNDP's and UNEP's components and both phases of the project can be summarized as follows:

|  | <b>Funds Phase I<br/>MSP (\$)</b> | <b>Substantive<br/>revision:<br/>additional<br/>resources<br/>Funds Phase II<br/>MSP (\$)</b> | <b>TOTAL (\$)</b> |
|--|-----------------------------------|---|-------------------|
| <b><i>GEF</i></b>                            |                                   |   |                   |
| UNDP   | 885,000                           | 980,000   | 1,865,000         |
| UNEP   | 115,000                           | 20,000  | 135,000           |
| <b>TOTAL GEF</b>                             | <b>1,000,000</b>                  | <b>1,000,000</b>  | <b>2,000,000</b>  |
| <b><i>Co-financing</i></b>                   |                                   |   |                   |
| Countdown 2010                               | 220,450                           | 179,550   | 400,000           |
| UNDP Mainstreaming BD into national planning | 257,500                           | 257,500   | 515,000           |
| UNDP Global BD programme (MDG rollout)       | 275,000                           | 275,000   | 550,000           |
| <b>TOTAL Co-financing</b>                    | <b>752,950</b>                    | <b>712,050</b>  | <b>1,465,000</b>  |
| <b>PROJECT GRAND TOTAL</b>                   | <b>1,752,950</b>                  | <b>1,712,050</b>  | <b>3,465,000</b>  |

51. In connection with the substantive revision of this PRODOC, the incorporation of funds approved for Phase II are to be incorporated into the budget. Therefore the budget is proposed revised as follows:

**Table 6. Phase I Summarised Budget and Workplan – Phases I and II**

| GEF Outcome/Atlas Activity (short name)                        | Responsible Party/Implementing Agent | Fund ID | Donor Name | Atlas Budgetary Account Code | ATLAS Budget Description       | Amount 2008 (USD) | Amount 2009 (USD) | Amount 2010 (USD) | Total (USD)      | Budget Note: |
|--|--------------------------------------|---------|------------|------------------------------|--------------------------------|-------------------|-------------------|-------------------|------------------|--------------|
| OUTCOME 1)<br>Support to countries for 2010 Targets Assessment | UNDP                                 | 62000   | GEF        | 72600                        | Grants                         | 839,800           | 960,000           |                   | <b>1,779,800</b> | a            |
|  |                                      |         |            |                              | <b>Total Outcome 1</b>         | 839,800           | 960,000           |                   | <b>1,779,800</b> |              |
| OUTCOME 2)<br>Knowledge Mgt, Learning, feedback M&E            | UNDP                                 | 62000   | GEF        | 71400                        | Contractual Services - Individ | 19,700            |                   |                   | 19,700           | c            |
|  |                                      |         |            | 74100                        | Professional Services          | 15,000            |                   |                   | 15,000           | d            |
|  |                                      |         |            | 74200                        | Audio Visual&Print Prod Costs  | 5,000             |                   |                   | 5,000            | e            |
|  |                                      |         |            | 71400                        | Contractual Services - Individ | 0                 |                   | 20,000            | 20,000           | f            |
|  |                                      |         |            | <b>Total Outcome 2</b>       | <b>39,700</b>                  |                   | <b>20,000</b>     | <b>59,700</b>     |                  |              |
| Project Management Budget                                      | UNDP                                 | 62000   | GEF        | 74100                        | Professional Services          | 5,500             |                   |                   | 5,500            | g            |
|  |                                      |         |            |                              | <b>Total Project Mgt</b>       | 5,500             |                   |                   | 5,500            |              |
| <b>PROJECT TOTAL</b>   |                                      |         |            |                              |                                | <b>885,000</b>    | <b>960,000</b>    | <b>20,000</b>     | <b>1,865,000</b> |              |

| Budget Notes       |  |
|--------------------|--|
| a                  | 2010 Consultation funding for max. 42 countries in Phase I (fully committed in 2008) and 48 countries in Phase II (\$20,000 per country)   |
| b                  | Fourth national report review as per demand for max. 39 countries at an average of \$1,800 per report. May translate into the following UNEP budget codes: '2300 Sub-contracts (commercial purposes)' or '1200 Consultants'.       |
| c                  | Preparation of 2010 National Targets Guide   |
| d                  | Translation of 2010 National Targets Guide into French and Spanish   |
| e                  | Printing of 2010 National Targets Guide  |
| f                  | Final Evaluation: one senior consultant (the other one will be contracted by UNEP) – reference is made to Annex A in the Phase II approved GEF proposal  |
| g                  | Support to the preparation of financial reports (\$5,500 as a management cost - local consultant, part time, i.e. 4-6 weeks of support over 12 months).  |
| general            | Unallocated funds will be returned to the GEF Secretariat upon completion of the project. Consultants to be hired with GEF funds will not be paid more than \$1,000/week for local consultants and \$3,000/week for international. |
| Atlas information: | Atlas Award: 00057358 / Atlas Proposal: 00047594<br>Award Title: PIMS 3918 BD MSP: GLO Support to CBD 2010 targets + 4NR   |

52. Based on the phased workplan (Appendix 1, Annex E-7 and a further development of activities for this phase, the following detailed workplan for both phases has been prepared:

**Table 7. Chronogramme for Phases I and II**

| Phases   | Key activities   | 2008 |    |    |    | 2009 |    |    |    | 2010 |    |    |    | 2011 |    |    |    |
|--|--|------|----|----|----|------|----|----|----|------|----|----|----|------|----|----|----|
|  |  | Q1   | Q2 | Q3 | Q4 | Q1   | Q2 | Q3 | Q4 | Q1   | Q2 | Q3 | Q4 | Q1   | Q2 | Q3 | Q4 |
| Phase I<br>\$1.0million in<br>GEF funding<br>approved in Aug<br>2007                         | Processing of funding for max. 42 countries                            |      | ■  | ■  |    |      |    |    |    |      |    |    |    |      |    |    |    |
|  | 2010 Guidelines publication prepared                                   |      | ■  | ■  |    |      |    |    |    |      |    |    |    |      |    |    |    |
|  | 4NR Portal within the CBD CHM developed and regularly updated          |      | ■  | ■  |    |      |    |    |    |      |    |    |    |      |    |    |    |
|  | Review of fourth national reports from LDCs and/or SIDS as per demand* |      |    | ■  | ■  | ■    | ■  | ■  |    |      |    |    |    |      |    |    |    |
| Phase II<br>\$1.0 million in<br>GEF funding for<br>approval in the<br>3rd Quarter of<br>2008 | Processing of funding for max. 48 countries                            |      |    | ■  | ■  | ■    | ■  | ■  | ■  | ■    |    |    |    |      |    |    |    |
|  | Review of fourth national reports from LDCs and/or SIDS as per demand* |      |    |    |    | ■    | ■  | ■  | ■  | ■    | ■  | ■  | ■  |      |    |    |    |
|  | Webpages revamped and regularly updated.                               |      |    |    |    | ■    | ■  | ■  | ■  | ■    | ■  | ■  | ■  |      |    |    |    |
|  | Evaluation of the project  |      |    |    |    |      |    |    |    | ■    | ■  |    |    |      |    |    |    |

CBD Deadline for submitting the fourth national report | 2nd quarter 2010 COP10

\* For budgeting and administrative purposes, funding for this activity will be included in Phase I of the project, instead of spread over the two phases. Among eligible countries, it is expected that there will be 35-40 LDC and/or SIDS that can potentially request their Report reviewed.

\*\* The grant provision activity ('Processing of funding for max. X countries') is likely to be most intense up the March 09 deadline; but it is not discarded that some countries may be slow in submitting eligible country requests, so their funding is approved after the CBD stipulated deadline. For those countries, data from their reports will most likely not be considered in the production of the CBD's Third Global Biodiversity Outlook.

# SECTION IV: ADDITIONAL INFORMATION

## PART I: APPROVALS AND ENDORSEMENTS

### 1) CLEARANCE FOR THE ADOPTION OF THE DIRECT EXECUTION MODALITY (DEX) DATED 14 MARCH 2008

DEX Clearance Page (1/3)

Ref: 04/XX  
Resource Management Clearance  
(DEX EXECUTION MODALITY)

*This clearance is for (Global) Support to GEF Eligible CBD Parties for carrying out 2010 Biodiversity Targets National Assessments - Phase I (4NR) that will be managed in ATLAS & IMIS- (where applicable) using the DEX modality.*

New Project ( X )                      Project Revision ( )

#### I. Project Information

Proposal Number                      00047594  
Project Number:                      : 00057358  
Project Title:                      *(Global) Support to GEF Eligible CBD Parties for carrying out 2010 Biodiversity Targets National Assessments - Phase I (4NR) – (PIMS 3918)*  
Total UNDP Contribution:  
Other Resources:                      GEF    \$885,000  
TOTAL Resources:                      \$885,000

#### II. Request/Submission/Clearance

Requested by:  8 Jan 08  
Date  
Yannick Glemarec  
Executive Coordinator,  
GEF/EFG/BDP  
Through:  12 Jan 08  
Date  
Veerle Vanderveerd  
Director, EFG/BDP  
Submitted by:  27 Feb 08  
Date  
Olav Kjørven  
Assistant Administrator  
Director, BDP

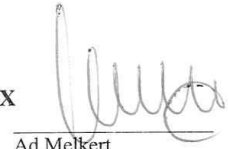
#### BoM Clearances OPB

 29 Feb 2008  
Date  
Jocelline Bazile-Finley  
Director, OP/BoM

#### BoM/OFA

 3/08  
Date  
Darshak Shah  
Director, OF/BoM

#### III. Approval for DEX Approved by

 4/7/08  
Date  
Ad Melkert  
Associate Administrator

*Cleared by OS6: Ceres L. Andman,  
DEX Clearance  
Cathy Maize x 5 393      10-March-08*

  
S. Raju Thomas  
EDP/PSU

#### **IV. Financial Accountability and Financial Liability\*:**

**Primary responsibility, accountability and liability**

Olav Kjørven, Assistant Administrator and Director, BDP

**Contingent responsibility, accountability and liability**

Group Leader: Ms. Veerle Vanderveerd, Director, EEG/BDP; Yannick Glemarec, GEF Executive Coordinator; John Hough, GEF Principal Technical Advisor, Biodiversity, Fabiana Issler, Technical Advisor/Project Manager

*\* Note: The manager who bears primary responsibility for the project # undertakes to provide the required substantive, administrative and financial accounting and financial reporting as outlined in the appended cost-sharing agreement or the appended project document and draft guidelines for Direct Execution (latest revision as of date is the one issued on June 2001).*

#### **V. Justification/Remarks**

*(Please provide justification for DEX arrangement. Why is it preferred over other arrangements?)*

The execution modality agreed upon is DEX as this project meets the criteria required by programmes managed by headquarters. DEX by UNDP/GEF HQ was selected as the most flexible and effective mechanism based on (a) the short time frame for completion and submission of Fourth National Reports by countries to the CBD by 2010, (b) the small size of individual country requests (not exceeding \$20,000 per country) and (c) the large number of countries to be assisted under this project (up to 42 countries). The project is expected to be financially/ operationally completed within 12 months. The GEF funds will be disbursed as grants to the respective countries offices. UNDP/GEF, in collaboration with UNEP/GEF will be responsible for technical review of the request for funding, and will upon request, provide inputs into technical quality of the reports, but will not be accountable for final quality and content of the National Report.

DEX Clearance  
Cathy Maize x 5893



*Annex I*

### Check List of Key Requirements

|   | Yes                                 | No |
|---|-------------------------------------|----|
| <b>Funds Sufficiency</b>                      | <input checked="" type="checkbox"/> |    |
| <b>PAC Minutes (attach)</b>                   | <input checked="" type="checkbox"/> |    |
| <b>Resource Agreement</b><br>- Reviewed       | <input checked="" type="checkbox"/> |    |
| <b>Reporting Requirements</b><br>- Identified | As per Project Document             |    |

DEX Clearance  
Cathy Maize x 5893

## 2) RECORD OF COUNTRIES' ENDORSEMENTS

53. When Phase I started there were 25 pre-existing letters of endorsement from countries that were obtained by UNEP. These can be accessed through the following link:

<ftp://ftp.unon.org/dgefftp/lettersfor2010targets>

54. Of these 25 countries, three (03) acceded to the EU and are no longer eligible under this project (, and ten (10) countries sent in requests under Phase I, which were approved. The remainder countries among those 25 will have priority access to funding in Phase II. These are: Belarus, Colombia, Congo, Egypt, Kenya, Madagascar, Malawi, Mauritius, Mongolia, Namibia, Saint Lucia and Turkey.

55. Under phase I, 32 other letters of endorsement were obtained from countries. Furthermore, of the ten countries that had originally sent letters to UNEP and had proposals approved, some of them renewed their endorsement with updated letters. All the letters pertaining to Phase I can be accessed in country proposals that are posted in the 4NR Portal ([www.cbd.int/nr4](http://www.cbd.int/nr4)).

**Table 8. Record of endorsement on behalf of the Government possible targets under Phase II**

| Eligible Countries for GEF Biodiversity Funding (n=148) | Date of initial country endorsement to UNEP | OPF letter received during Phase I | Proposal received during Phase I | Country request cleared during Phase I | A = applied under Phase II (as of 28 Oct 2008); E = eligible (may still apply) under Phase II* | LDC | SIDS |
|---|---|------------------------------------|----------------------------------|--|--|-----|------|
| Afghanistan   | 12-Sep-06                                   | 12-Sep-06                          | Yes                              | Yes                                    |  | ✓   |      |
| Albania   |   |                                    |                                  |  | E  |     |      |
| Algeria   |   |                                    |                                  |  | A  |     |      |
| Angola  |   |                                    |                                  |  | A  | ✓   |      |
| Antigua And Barbuda                                     |   |                                    |                                  |  | E  |     | ✓    |
| Argentina   |   |                                    |                                  |  | A  |     |      |
| Armenia   |   | 26-Dec-07                          | Yes                              | Yes                                    |  |     |      |
| Azerbaijan  |   |                                    |                                  |  | E  |     |      |
| Bahamas   |   |                                    |                                  |  | E  |     | ✓    |
| Bangladesh  |   |                                    |                                  |  | E  | ✓   |      |
| Barbados  |   |                                    |                                  |  | E  |     | ✓    |
| Belarus, Republic Of                                    | 25-Sep-06                                   |                                    |                                  |  | E  |     |      |
| Belize  |   |                                    |                                  |  | E  |     | ✓    |
| Benin   |   | 14-Dec-07                          |                                  | Pending                                |  | ✓   |      |
| Bhutan  |   |                                    | Yes                              | Yes                                    |  | ✓   |      |
| Bolivia   |   |                                    |                                  |  | E  |     |      |
| Bosnia And Herzegovina                                  | 16-Jan-07                                   | 31-Mar-08                          | Yes                              | Yes                                    |  |     |      |
| Botswana  |   |                                    |                                  |  | A  |     |      |
| Brazil  |   |                                    |                                  |  | E  |     |      |
| Bulgaria  |   |                                    |                                  |  | E  |     |      |
| Burkina Faso  |   |                                    |                                  |  | A  | ✓   |      |
| Burundi   |   |                                    |                                  |  | A  | ✓   |      |
| Cambodia  |   |                                    |                                  |  | E  | ✓   |      |
| Cameroon, Republic Of                                   |   | 14-Dec-07                          | Yes                              | Yes                                    | E  |     |      |
| Cape Verde  |   |                                    |                                  |  | E  | ✓   | ✓    |
| Central African Republic                                |   |                                    |                                  |  | E  | ✓   |      |
| Chad  |   |                                    |                                  |  | A  | ✓   |      |
| Chile   |   | 12-Feb-08                          | Yes                              | Yes                                    | E  |     |      |
| China   |   | 16-Apr-08                          | Yes                              | Yes                                    |  |     |      |
| Colombia  | 04-Oct-06                                   |                                    |                                  |  | E  |     |      |
| Comoros   |   |                                    |                                  |  | E  | ✓   | ✓    |
| Congo   | 06-Sep-06                                   |                                    |                                  |  | E  |     |      |

| Eligible Countries for GEF Biodiversity Funding (n=148) | Date of initial country endorsement to UNEP | OFFP letter received during Phase I | Proposal received during Phase I | Country request cleared during Phase I | A = applied under Phase II (as of 28 Oct 2008); E = eligible (may still apply) under Phase II* | LDC | SIDS |
|---|---|-------------------------------------|----------------------------------|--|--|-----|------|
| Congo Democratic Republic                               |   | 31-Dec-07                           | Yes                              | Yes                                    |  | ✓   |      |
| Cook Islands  |   |                                     |                                  |  | E  |     | ✓    |
| Costa Rica  |   |                                     |                                  |  | A  |     |      |
| Cote d'Ivoire   | 19-Sep-06                                   | 19-Sep-06                           | Yes                              | Yes                                    |  |     |      |
| Croatia   |   | 28-Feb-08                           | Yes                              | Yes                                    |  |     |      |
| Cuba  |   | 30-Apr-08                           | Yes                              | Yes                                    |  |     | ✓    |
| Democratic People's Republic Of Korea                   |   |                                     |                                  |  | E  |     |      |
| Djibouti  |   | 21-Jan-08                           | Yes                              | Yes                                    |  | ✓   |      |
| Dominica  |   | 23-Apr-08                           | Yes                              | Yes                                    |  |     | ✓    |
| Dominican Republic                                      |   |                                     |                                  |  | A  |     | ✓    |
| Ecuador   |   |                                     |                                  |  | E  |     |      |
| Egypt   | 03-Oct-06                                   |                                     |                                  |  | A  |     |      |
| El Salvador   |   |                                     |                                  |  | E  |     |      |
| Equatorial Guinea                                       |   |                                     |                                  |  | E  | ✓   |      |
| Eritrea   | 03-Oct-06                                   |                                     | Yes                              | Yes                                    | A  | ✓   |      |
| Ethiopia  |   |                                     |                                  | Yes                                    | A  | ✓   |      |
| Fiji  |   |                                     |                                  |  | E  |     | ✓    |
| Gabon   |   |                                     |                                  |  | E  |     |      |
| Gambia  |   |                                     |                                  |  | E  | ✓   |      |
| Georgia, Republic Of                                    |   |                                     |                                  |  | E  |     |      |
| Ghana   | 06-Sep-06                                   |                                     | Yes                              | Yes                                    |  |     |      |
| Grenada   |   |                                     |                                  |  | A  |     | ✓    |
| Guatemala   |   |                                     | Yes                              |  | E  |     |      |
| Guinea  |   | 11-Mar-08                           | Yes                              | Yes                                    |  | ✓   |      |
| Guinea-Bissau   |   |                                     |                                  |  | A  | ✓   | ✓    |
| Guyana  |   |                                     |                                  |  | E  |     | ✓    |
| Haiti   |   |                                     |                                  |  | E  | ✓   | ✓    |
| Honduras  |   |                                     |                                  |  | E  |     |      |
| Hungary   |   |                                     |                                  |  | E  |     |      |
| India   |   | 03-Apr-08                           | Yes                              | Yes                                    |  |     |      |
| Indonesia   | 25-Sep-06                                   | 19-Mar-08                           | Yes                              | Yes                                    |  |     |      |
| Iran  |   |                                     |                                  |  | E  |     |      |
| Jamaica   |   |                                     |                                  |  | E  |     | ✓    |
| Jordan  |   | 23-Jan-08                           | Yes                              | Yes                                    |  |     |      |
| Kazakhstan  |   |                                     |                                  |  | E  |     |      |
| Kenya   | 08-Sep-06                                   |                                     |                                  |  | E  |     |      |
| Kiribati  |   |                                     |                                  |  | E  | ✓   | ✓    |
| Kyrgyzstan  |   | 12-Dec-07                           | Yes                              | Yes                                    |  |     |      |
| Lao People's Democratic Republic                        |   |                                     |                                  |  | E  | ✓   |      |
| Lebanon   |   |                                     | Yes                              |  | E  |     |      |
| Lesotho   |   |                                     |                                  |  | E  | ✓   |      |
| Liberia   |   | 10-Jan-08                           | Yes                              | Yes                                    |  | ✓   |      |
| Libyan Arab Jamahiriya                                  |   |                                     |                                  |  | E  |     |      |
| Macedonia   |   |                                     |                                  |  | E  |     |      |
| Madagascar  | 29-Sep-06                                   |                                     |                                  |  | E  | ✓   |      |
| Malawi  | 25-Sep-06                                   |                                     |                                  |  | E  | ✓   |      |
| Malaysia  |   |                                     | Yes                              |  | E  |     |      |
| Maldives  |   |                                     |                                  |  | E  | ✓   | ✓    |
| Mali  |   |                                     |                                  |  | A  | ✓   |      |
| Marshall Islands  |   |                                     |                                  |  | E  |     | ✓    |
| Mauritania  |   | 12-Dec-07                           | Yes                              | Pending                                |  | ✓   |      |
| Mauritius   | 25-Oct-06                                   |                                     |                                  |  | A  |     | ✓    |
| Mexico  |   |                                     |                                  |  | E  |     |      |
| Micronesia, The Federated States Of                     |   |                                     |                                  |  | E  |     | ✓    |

| Eligible Countries for GEF Biodiversity Funding (n=148) | Date of initial country endorsement to UNEP | OFF letter received during Phase I | Proposal received during Phase I | Country request cleared during Phase I | A = applied under Phase II (as of 28 Oct 2008); E = eligible (may still apply) under Phase II* | LDC | SIDS |
|---|---|------------------------------------|----------------------------------|--|--|-----|------|
| Moldova   |   | 05-Feb-08                          | Yes                              | Yes                                    |  |     |      |
| Mongolia  | 12-Sep-06                                   |                                    |                                  |  | E  |     |      |
| Montenegro  |   |                                    |                                  |  | E  |     |      |
| Morocco   | 27-Sep-06                                   | 14-Jan-08                          | Yes                              | Yes                                    | E  |     |      |
| Mozambique  | 19-Sep-06                                   | 19-Sep-06                          | Yes                              | Yes                                    |  | ✓   |      |
| Myanmar   |   |                                    | Yes                              |  | **   | ✓   |      |
| Namibia   | 20-Nov-06                                   |                                    |                                  |  | E  |     |      |
| Nauru   |   |                                    |                                  |  | E  |     | ✓    |
| Nepal   |   | 24-Mar-08                          | Yes                              | Yes                                    |  | ✓   |      |
| Nicaragua   |   | 22-Apr-08                          | Yes                              | Yes                                    |  |     |      |
| Niger   |   | 19-Mar-08                          | Yes                              | Yes                                    |  | ✓   |      |
| Nigeria   |   |                                    |                                  |  | E  |     |      |
| Niue  |   | 09-May-08                          | Yes                              | Yes                                    |  |     | ✓    |
| Pakistan  | 14-Sep-06                                   |                                    | Yes                              | Yes                                    | A  |     |      |
| Palau   |   |                                    |                                  |  | E  |     | ✓    |
| Panama  |   |                                    |                                  |  | E  |     |      |
| Papua New Guinea  |   |                                    |                                  |  | E  |     | ✓    |
| Paraguay  |   |                                    |                                  |  | E  |     |      |
| Peru  |   |                                    |                                  |  | E  |     |      |
| Philippines   |   | 20-Mar-08                          | Yes                              | Yes                                    |  |     |      |
| Poland  |   |                                    |                                  |  | E  |     |      |
| Republic Of Korea                                       |   |                                    |                                  |  | E  |     |      |
| Romania   |   |                                    |                                  |  | E  |     |      |
| Russian Federation                                      |   | 24-Apr-08                          | Yes                              | Yes                                    |  |     |      |
| Rwanda  |   |                                    |                                  |  | A  | ✓   |      |
| Saint Kitts And Nevis                                   |   |                                    |                                  |  | E  |     | ✓    |
| Saint Lucia   | 02-Nov-06                                   |                                    |                                  |  | E  |     | ✓    |
| Saint Vincent And The Grenadines                        |   | 23-Apr-08                          | Yes                              | Yes                                    |  |     | ✓    |
| Samoa   |   |                                    |                                  |  | E  | ✓   | ✓    |
| Sao Tome And Principe                                   |   | 28-Feb-08                          | Yes                              | Yes                                    |  | ✓   | ✓    |
| Senegal   |   |                                    |                                  |  | E  | ✓   |      |
| Serbia  |   |                                    |                                  |  | E  |     |      |
| Seychelles  |   |                                    |                                  |  | E  |     | ✓    |
| Sierra Leone  |   |                                    |                                  |  | E  | ✓   |      |
| Solomon Islands   |   |                                    |                                  |  | E  | ✓   | ✓    |
| South Africa  |   |                                    |                                  |  | E  |     |      |
| Sri Lanka   |   | 04-Apr-08                          | Yes                              | Yes                                    |  |     |      |
| Sudan   |   |                                    |                                  |  | A  | ✓   |      |
| Suriname  |   |                                    |                                  |  | E  |     | ✓    |
| Swaziland   |   |                                    |                                  |  | E  |     |      |
| Syrian Arab Republic                                    |   |                                    | Yes                              |  | E  |     |      |
| Tajikistan  |   | 30-Nov-07                          | Yes                              | Yes                                    |  |     |      |
| Tanzania  |   |                                    |                                  |  | A  | ✓   |      |
| Thailand  |   |                                    |                                  |  | E  |     |      |
| Togo  | 19-Sep-06                                   | 19-Sep-06                          | Yes                              | Yes                                    |  | ✓   |      |
| Tonga   |   |                                    |                                  |  | E  |     | ✓    |
| Trinidad And Tobago                                     |   |                                    |                                  |  | E  |     | ✓    |
| Tunisia   |   | 31-Jan-08                          | Yes                              | Yes                                    |  |     |      |
| Turkey  | 12-Oct-06                                   |                                    |                                  |  | E  |     |      |
| Turkmenistan  |   | 28-Nov-07                          | Yes                              | Yes                                    |  |     |      |
| Tuvalu  |   |                                    |                                  |  | E  | ✓   | ✓    |
| Uganda  |   | 05-Feb-08                          | Yes                              | Yes                                    |  | ✓   |      |
| Ukraine   |   |                                    |                                  |  | E  |     |      |
| Uruguay   |   |                                    |                                  |  | E  |     |      |

| Eligible Countries for GEF Biodiversity Funding (n=148) | Date of initial country endorsement to UNEP | OFFP letter received during Phase I | Proposal received during Phase I | Country request cleared during Phase I | A = applied under Phase II (as of 28 Oct 2008); E = eligible (may still apply) under Phase II* | LDC | SIDS |
|---|---|-------------------------------------|----------------------------------|--|--|-----|------|
| Uzbekistan  |   |                                     |                                  |  | E  |     |      |
| Vanuatu   |   |                                     |                                  |  | E  | ✓   | ✓    |
| Venezuela   |   |                                     |                                  |  | A  |     |      |
| Viet Nam  |   | 22-Feb-08                           | Yes                              | Yes                                    |  |     |      |
| Yemen   |   |                                     |                                  |  | E  |     |      |
| Zambia  |   |                                     |                                  |  | A  | ✓   |      |
| Zimbabwe  |   |                                     |                                  |  | E  |     |      |

\* Letters of Endorsement from the GEF Operational Focal Point (OFFP) will be obtained on a rolling basis. Letters from approved proposal can be found at [www.cbd.int/nr4](http://www.cbd.int/nr4).

\*\* UNDP is barred from operating in Myanmar.

## PART II: TERMS OF REFERENCES FOR KEY PROJECT STAFF AND MAIN SUB-CONTRACTS

### 3) PREPARATION OF 2010 GUIDE PUBLICATION

#### TERMS OF REFERENCE

#### Sub-contract to prepare a Guidance document to assist countries in preparation of their Fourth National Reports / 2010 Biodiversity Targets National Assessment

#### Background:

With focus on the 2010 Biodiversity Commitments at country level, UNDP and UNEP are jointly implementing a two phased global umbrella Medium Size Project (MSP), within the Enabling Activities window, with the aim of providing finance for the preparation of countries' fourth national report to the CBD, which central theme is the 2010 Biodiversity Targets.

The project is designed to assist interested and BD eligible countries, financially and substantively, in assessing progress towards the 2010 Target through a national participatory assessment process, using the provisional framework for goals and targets adopted by the CBD COP decision VIII/15 and the guidelines for the fourth national report of the CBD will be used in connection with the national assessment. The joint partnership and umbrella approach are aimed at reducing transaction costs of individual country requests, providing the GEF, UNDP and UNEP an opportunity for managing the biodiversity Enabling Activities more strategically in close partnership with the CBD and other key global actors. Activities at country level will include data gathering – building, wherever possible, on existing data and processes – stakeholder consultations, as well as reporting and communicating on 2010 Targets.

In connection with this process and in light of previous experience, particularly with the funding of the third national report, which also applied the umbrella approach, UNDP (in collaboration with project partners) is commissioning the development of guidance material to provide assistance to countries, a publication that will be translated into English, French and Spanish and will be made widely available in printed form and through the project's webpages within the CBD CHM.

For more information on the project, the [approved GEF MSP](#) and/or the UNDP project document (to be sent upon request) may be consulted.

### **Scope of activity:**

The guidance material would be developed in the form of a short and user-friendly guide (approximately 20-25 pages). It will touch briefly upon the procedures for accessing the funding, but will particularly focus on the substantive aspects of the 2010 Targets National Assessments process as follows:

- (a) a suggested methodology on how countries could manage the “process” of report preparation, including synthesizing information, undertaking consultations with stakeholders, and validating information to be included in the report. This includes the establishing national targets for 2010, the information and data requirements for measuring the chosen indicators and the analytical process of interpreting and contextualizing results
- (b) advice on process of the planning and carrying out a national 2010-targets consultation process
- (c) the requirements for compiling the fourth national report to the CBD
- (d) suggestions for other envisaged products related to 2010-targets,
- (e) a suggested methodology for the dissemination and communication of the results from country activities
- (f) Examples of best practices from earlier reporting process to the CBD (First, Second and Third National Reports, and NBSAPs), and
- (g) provide links to relevant thematic material available for countries to consult.

### **Qualifications:**

The work will be commissioned through a suitable organization whose proposal is selected on a competitive basis. The work will be undertaken by an expert(s) with thorough knowledge of the CBD and its requirements, understanding of consultative and analytical processes, and capacity development.

Substantive proposals from individual consultants with a relevant knowledge and experience with respect to NBSAPs and CBD national reporting are also welcome as application.

### **Time-Frame:**

**A total of 20 days of consultant input to be provided between 18 February and 28 March 2008.**

This will include five (05) days preparation time, ten (10) days writing time, and five (05) days for final consultations and incorporating comments and producing a final document.

An initial draft version of the guide will be produced first and circulated by UNDP to partners for their input in early April 2008. Comments and suggestions will be incorporated into the final version of the guide, to be submitted as a final draft by close of business on Friday 18 April 2008.

### **4) CONSULTANT: PROGRAMME SUPPORT TO THE PROJECT**

Reporting to the Project Task Manager and under operational guidance from the UNDP/GEF Global Programme Associate for Biodiversity, the consultant will be responsible for the following:

1. Under substantive guidance from the Project Task Manager, provide clearance to countries’ requests for funding using the project’s MS Access database, handling all relevant correspondence to proponents directly (when applicable) as well as from the UNDP/GEF Regional Coordination Units and Country Offices.
2. Refer any non-standard country requests for funding to the project manager for decision, providing all relevant information and background.

3. Timely finalization of Framework Service Agreements (FSA) including updating Atlas activities, obtaining clearances, informing Regional Coordination Units of FSA status
4. Rephrasing project budget as required
5. Regular review of project expenditures under the various project activity lines
6. Closing project activities upon confirmation respective country office payments have been made
7. Pro-actively identify Atlas problems entries (ie. NEX advance instead of charge against DEX) / trouble shoot Country office re: purchase order approvals, GL entries, incorrect or recommend follow up with help desk when problem cannot be solved

## **5) OUTLINE OF TASKS FOR THE EVALUATION CONSULTANTS**

Two international consultants with sufficient maturity and experience will be engaged to evaluate the project. One will be contracted by UNDP and the other by UNEP.

TOR will be submitted to the review of the PSC and the Committee will be engaged in the process of selecting candidates.

The consultants will need to be independent from project implementation and be fully acquainted with relevant M&E policies of the GEF, UNDP and UNEP.

The consultants will focus on the project's two major intervention levels: the global level and the national level, the latter through a sample of randomly selected countries, where focused interviews with key stakeholders can be conducted through teleconference. The scope of the evaluation can be summarized as follows:

- Project achievements at the impact level.
- The project's sustainability in terms of the extent to which the benefits of the project will continue, within or outside the project domain, after it has come to an end.
- The Monitoring & Evaluation procedures put in place by the project, in particular examine (a) the procedure of each of the implementing agencies separately and the coordination between them towards good M&E practices; (b) the selection of indicators, the mechanisms of review and monitoring, and the adaptive management approach that the project would have followed to respond to changes in the context and responses.
- The implementation approach, focusing on (a) execution arrangements; (b) institutional arrangements; (c) the global and national benefits of the project; (d) coordination arrangements among the various agencies and project partners
- The efficiency of the technical backstopping
- The financial management of the project; assess the cost-effectiveness of the activities
- The degree of participation of the various stakeholders, through applicable methodological approaches.

## **PROJECT APPENDICES**

Appendix 1. Requests for CEO Approval (Approved MSPS Phase I and II)

Appendix 2. Co-financing letters

Appendix 3. CEO approval (phases I and II) and updated tracking sheet

Appendix 4. Minutes of Project Appraisal Committee Meeting

Appendix 5. Draft template for framework service agreement

Appendix 6. Work plan and budget 2008 / 2009 - for entry into atlas



## APPENDIX 1. REQUESTS FOR CEO APPROVAL (APPROVED MSPS PHASES I AND II)

Refer to separate files with the overview below:

[Appendix 1a Phase I MSP Proposal.pdf](#)

(57 pages)

### Part I: Project Information

- A. Project framework
- B. Financing Plan Summary For The Project (\$)
- C. Sources of confirmed Co-Financing
- D. GEF Resources Requested by Focal Area(s), Agency(ies) or Country(ies)
- E. Project management Budget/cost
- F. Consultants working for technical assistance components:
- G. Describe the budgeted M&E Plan:

### Part II: Project Justification

- A. Describe the project rationale and the expected measurable global environmental benefits
- B. Describe the consistency of the project with national priorities/plans
- C. Describe the consistency of the project with GEF Strategies and strategic programs
- D. Outline the Coordination with other related initiatives
- E. Describe the Incremental Reasoning of the project
- F. Indicate risks, including climate change risks, that might prevent the project objective(s) from being achieved and outline risk management measures
- G. Explain how cost-effectiveness is reflected in the project design:

### Part III: Institutional Coordination and Support

- A. Project Implementation Arrangement

### Part IV: Explain the alignment of project design with the original PIF

### Part V: Agency(ies) certification

Annex A: Project Results Framework

Annex B: Responses to Project Reviews

Annex C: Consultants to be hired for the project

Annex D: Status of implementation of project preparation activities and the use of funds

Annex E: Supplementary Annexes to the Project (1 – 9)

Annex 1. Country Endorsement Letter

Annex 2. The 2010 Biodiversity Goals and Targets

Annex 3. Indicative list of countries targeted for assistance under this project during Phase I

Annex 4. Links between the 2010 Biodiversity Targets and the CBD's Fourth National Report

Annex 5. Format for Country Request for the 2010 Biodiversity Targets National Assessment

Annex 6. Excerpt from CBD COP Decisions VIII/15 and VIII/14

Annex 7. Indicative Workplan for both Phases

Annex 8. Webpage content, Role of consultant(s) and modalities for hiring by UNEP DGEF and its partners.

Annex 9. TOR for the Project Steering Committee and Minutes of the First Meeting (07 Jul 2007)

Part I: Project Information

- A. Project framework
- B. Financing Plan Summary For The Project (\$)
- C. Sources of confirmed Co-Financing
- D. GEF Resources Requested by Focal Area(s), Agency(ies) or Country(ies)
- E. Project management Budget/cost
- F. Consultants working for technical assistance components:
- G. Describe the budgeted M&E Plan:

Part II: Project Justification

- A. Describe the project rationale and the expected measurable global environmental benefits
- B. Describe the consistency of the project with national priorities/plans
- C. Describe the consistency of the project with GEF Strategies and strategic programs
- D. Outline the Coordination with other related initiatives
- E. Describe the Incremental Reasoning of the project
- F. Indicate risks, including climate change risks, that might prevent the project objective(s) from being achieved and outline risk management measures
- G. Explain how cost-effectiveness is reflected in the project design:

Part III: Institutional Coordination and Support

- A. Project Implementation Arrangement

Part IV: Explain the alignment of project design with the original PIF

Part V: Agency(ies) certification

Annex A: Project Results Framework

Annex B: Responses to Project Reviews

Annex C: Consultants to be hired for the project

Annex D: Status of implementation of project preparation activities and the use of funds

Annex E: Supplementary Annexes to the Project (1 – 10)

Annex 1. Country Endorsement Letter

Annex 2. The 2010 Biodiversity Goals and Targets

Annex 3. Record of Approved Proposals under Phase I

Annex 4. Links between the 2010 Biodiversity Targets and the CBD's Fourth National Report

Annex 5. Format for Country Request for the 2010 Biodiversity Targets National Assessment

Annex 6. Excerpt from CBD COP Decisions VIII/15 and VIII/14

Annex 7. Indicative Workplan for both Phases

Annex 8. Reporting on Results from Project's Phase I using the Results framework

Annex 9. TOR for the Project Steering Committee

Annex 10. TOR for UNEP's Review of Fourth National Reports from LDCs and SIDS

United Nations Development Programme



22 Friday 2007

Dear Ms. Barbut,

**Letter of co-financing to the project  
'Towards 2010 Biodiversity Commitments'**

*UNDP-UNEP MSP Support to GEF Eligible CBD Parties for carrying out 2010 Biodiversity Targets  
National Assessments - Phases I and II*

UNDP is pleased to confirm a total of \$1,065,000 in the form of co-financing to the above captioned UNDP-UNEP joint global project '**Towards 2010 Biodiversity Commitments**'.

Of these funds, \$515,000 are committed to the 'mainstreaming of biodiversity into national planning, governance systems, sectors, and organizations' component of the UNDP's Biodiversity Global Programme; and \$550,000 are currently committed to several activities in the area of integrating environment, including biodiversity, in countries' national development plans such as their Poverty Reduction Papers and MDG-based national strategies in the context of UNDP's 'Millennium Development Goals Support Rollout'.

The commitment made by the Convention on Biological Diversity and the World Summit on Sustainable Development to significantly reduce the loss of biodiversity by 2010 and the subsequent incorporation of this commitment as a new target in the UN MDG framework is a noteworthy advance in creating the right enabling policy environment for global action on this critical issue. Through its activities at the national, regional and global levels, UNDP remains committed to supporting efforts geared at making progress on the 2010 target.

Yours sincerely,

A handwritten signature in black ink, appearing to read 'Olav Kjørven', is written over a light grey background.

Olav Kjørven  
Assistant Administrator  
Director, Bureau for Development Policy

Ms. Monique BARBUT  
CEO and Chairperson  
Global Environment Facility



IUCN Regional Office for Europe - Blvd Louis Schmidt 64 - B-1040 Brussels

Your contact

**Monique BARBUT**  
Chief Executive Officer and Chairperson  
GEF  
1818 H Street NW  
Washington DC 20433  
USA  
Fax: +1 202-522-3240

Sebastian Winkler  
Head of Countdown 2010  
Tel: +32 2 739 0322  
sebastian.winkler@iucn.org

Brussels, 21 June 2007

**Letter of co-financing to the project**

**'Towards 2010 Biodiversity Commitments'**

*UNDP-UNEP MSP Support to GEF Eligible CBD Parties for carrying out 2010 Biodiversity  
Targets National Assessments - Phases I and II*

Dear Ms Barbut,

This is to confirm that the Countdown 2010 Secretariat will provide in-kind co-financing through staff time, communications and travel amounting to the above mentioned UNDP-UNEP joint global project '**Towards 2010 Biodiversity Commitments**' for the entire period of the project.

These funds, amounting to a total of USD 70'000 per year (up to approx USD 400'000) are tied to several activities at global and country level in the area of biodiversity policy making and awareness-raising, which all directly contribute to the same goals as the project and are planned for the period of 2007-2010.

Yours Sincerely,

Tamés Marghecu

IUCN Regional Director for Europe  
Countdown 2010

Countdown 2010 is hosted by

**IUCN Regional Office  
for Europe aisbl**

Boulevard Louis Schmidt 64  
1040 Brussels  
Belgium

Tel +32 2 732 82 99

Fax +32 2 732 94 99

europa@iucn.org

www.iucneurope.org

VAT: BE 470 447 426

IBAN: BE 22 0013 5329 0547

SWIFT/BIC: GEBABEBB

Fortis Bank: 001-3532905-47

Governments worldwide have promised to save biodiversity by 2010.

Countdown 2010 helps them move from words to action. More info: [www.countdown2010.net](http://www.countdown2010.net)

Regional Office for Europe



Phase I Approval Letter



**Monique Barbut**  
Chief Executive Officer  
and Chairperson

**Global Environment Facility**

1818 H Street, NW  
Washington, DC 20433 USA  
Tel: 202.473.3202  
Fax: 202.522.3240/3245  
Email: mbarbut@TheGEF.org

November 07, 2007

Mr. Yannick Glemarec  
GEF Executive Coordinator  
United Nations Development Programme  
One United Nations Plaza  
304 East 45th St.  
FF Bldg., 10th floor  
New York, NY 10017

Ms. Maryam Niamir-Fuller  
GEF Executive Coordinator  
United Nations Environment Programme  
Nairobi 00100, Kenya

Messrs. Glemarec and Kakakhel:

I am pleased to inform you that I am approving the medium-sized project proposal entitled *Global: Support to GEF Eligible CBD Parties for Carrying Out 2010 Biodiversity Targets National Assessments - Phases I*, for \$1,000,000 in financing from the GEF Trust Fund. I understand that this project proposal will be submitted for approval in accordance with the UNDP/UNEP procedures.

I am also approving the fee of \$100,000 representing 10% of the project allocation for implementation services.

I am approving this project on the understanding that the project will meet the following milestones:

- (i) the grant agreement will be signed no later than December 2007;
- (ii) the closing date of the project grant will be no later than December 2010 and a terminal evaluation/project completion report will be submitted to the GEF Secretariat within 6 months of such closing date.

You are requested to ensure that the GEF Secretariat is informed when each of these milestones is met. If any milestone is not achieved, and after consultations with your agency, I may agree to revised milestones or recommend cancellation, termination, or suspension of the project, and I will communicate to the beneficiary country and your agency the basis for such a recommendation.

Please ensure that your grant agreements continue including a closing date and providing for your agency's right of cancellation, suspension or termination upon my recommendation to that effect.

I am attaching a copy of the project tracking sheet for your records.

Sincerely,



Monique Barbut  
Chief Executive Officer and Chairperson

Attachment

Phase I Tracking Sheet

Biodiversity  
OP : EA

PMIS Project ID : 3414  
UNDP/UNEP

GEF Project Tracking System  
Medium-Sized Project Clearance/Approval

**Global: Support to GEF Eligible CBD Parties for carrying out 2010 Biodiversity Targets  
National Assessments - Phases I**

| Authority           | GEF Contribution | Total Cost  | Requested Action  | Signature       | Date     |
|---------------------|------------------|-------------|-------------------|-----------------|----------|
| <b>PPG Review</b>   |                  |             |                   |                 |          |
| Program Manager     |                  |             | Recommendation    | Ravi Sharma     |          |
| Team Leader         |                  |             | Clearance         | Gustavo Fonseca |          |
| CEO                 |                  |             | Approval          | Monique Barbut  |          |
| <b>MSP Review</b>   |                  |             |                   |                 |          |
| Program Manager     | \$1,000,000      | \$1,752,950 | Recommendation    | Ravi Sharma     | 10/24/07 |
| Team Leader         |                  |             | Clearance         | Gustavo Fonseca | 10/24/07 |
| CEO                 |                  |             | Letter to Council |                 |          |
| <b>MSP Approval</b> |                  |             |                   |                 |          |
| Program Manager     | \$1,000,000      | \$1,752,950 | Recommendation    | Ravi Sharma     | 11-07-07 |
| Team Leader         | IA Fee \$100,000 |             | Clearance         | Gustavo Fonseca | 11-07-07 |
| CEO                 |                  |             | Approval          | Monique Barbut  | 11/07/07 |



## Global Environment Facility

1818 H Street, NW  
Washington, DC 20433 USA  
Tel: 202.473-0508  
Fax: 202.522.3240/3245  
Internet: www.theGEF.org

October 7, 2008

Mr. Yannick Glemarec  
GEF Executive Coordinator  
United Nations  
Development Programme  
One United Nations Plaza  
304 East 45<sup>th</sup> St.  
FF Bldg., 10<sup>th</sup> floor  
New York, NY 10017

Ms. Maryam Niamir-Fuller  
GEF Executive Coordinator  
United Nations Environment  
Programme  
Nairobi, Kenya

Dear Mr. Glemarec/Ms. Niamir-Fuller:

I am pleased to inform you that I am approving the medium-sized project proposal entitled ***Global: Support to GEF Eligible CBD Parties for Carrying out 2010 Biodiversity Targets National Assessments- Phase I***, for \$1,000,000 to be funded under the GEF Trust Fund (GEFTF). I understand that this project proposal will be submitted for Agency approval in accordance with the UNDP/UNEP procedures.

I am also approving the fee of \$100,000 representing 10% of the total GEF grant for implementation services.

| GEF Agency | Project Grant (\$) | Fee (\$) |
|------------|--------------------|----------|
| UNDP       | 980,000            | 65,000   |
| UNEP       | 20,000             | 35,000   |
| Total      | 1,000,000          | 100,000  |

I am approving this project on the understanding that the project will meet the following milestones:

- (i) The grant agreement will be signed no later than October 2008;
- (ii) The closing date of the project grant will be no later than February 2011 and a terminal evaluation/project completion report will be submitted to the GEF Secretariat within 6 months of such closing date.

*[It should read "Phase II"]*



Mr. Yannick Glemarec  
Ms. Maryam Niamir-Fuller

-2-

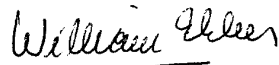
10/07/2008

You are requested to ensure that the GEF Secretariat is informed when each of these milestones is met. If any milestone is not achieved, and after consultations with your agency, I may agree to revised milestones or recommend cancellation, termination, or suspension of the project, and I will communicate to the beneficiary country and your agency the basis for such a recommendation..

I am attaching a copy of the project tracking sheet for your records.

Sincerely,

f/



Monique Barbut  
Chief Executive Officer and Chairperson

Attachments: GEF Project Tracking Sheet and Review Sheet

cc: Country Operational Focal Point, GEF Agencies, STAP, Trustee

PMIS No. Global: Support to GEF Eligible CBD Parties for Carrying Out 2010  
Biodiversity Targets National Assessments - Phases I

*[It should read "Phase II"]*

Phase I Tracking Sheet

Biodiversity  
OP : \*\*\*\*\*

PMIS Project ID : 3746  
UNDP/UNEP

GEF Project Tracking System  
Medium-Sized Project Clearance/Approval

**Global: Support to GEF Eligible CBD Parties for Carrying out 2010 Biodiversity Targets  
National Assessments- Phase II**

| Authority           | GEF Contribution   | Total Cost         | Requested Action  | Signature             | Date                 |
|---------------------|--------------------|--------------------|-------------------|-----------------------|----------------------|
| <b>PIF Review</b>   |                    |                    |                   |                       |                      |
| Program Manager     |                    |                    | Recommendation    | Danielius Pivoriusas  |                      |
| Team Leader         |                    |                    | Clearance         | Gustavo Fonseca       |                      |
| CEO                 |                    |                    | Approval          | Monique Barbut        |                      |
| <b>PPG Review</b>   |                    |                    |                   |                       |                      |
| Program Manager     |                    |                    | Recommendation    | Danielius Pivoriusas  |                      |
| Team Leader         |                    |                    | Clearance         | Gustavo Fonseca       |                      |
| CEO                 |                    |                    | Approval          | Monique Barbut        |                      |
| <b>MSP Review</b>   | <b>\$1,000,000</b> | <b>\$1,712,050</b> |                   |                       |                      |
| Program Manager     |                    |                    | Recommendation    | Danielius Pivoriusas  | <i>DP</i> 8/28/08    |
| Team Leader         |                    |                    | Clearance         | Gustavo Fonseca       | <i>GF</i> 8-28-08    |
| CEO                 |                    |                    | Letter to Council | CEO Letter to Council |                      |
| <b>MSP Approval</b> | <b>\$1,000,000</b> | <b>\$1,712,050</b> |                   |                       |                      |
| IA Fee              | <b>\$100,000</b>   |                    |                   |                       |                      |
| Program Manager     |                    |                    | Recommendation    | Danielius Pivoriusas  | <i>DP</i> 05/10/08   |
| Team Leader         |                    |                    | Clearance         | Gustavo Fonseca       | <i>GF</i> 10/06/08   |
| CEO                 |                    |                    | Approval          | Monique Barbut        | <i>MB</i> 8 OCT 2008 |

SM  
9/2

SM  
10/10/08

**APPENDIX 4A. MINUTES OF PROJECT APPRAISAL COMMITTEE MEETING**

[Virtual PAC MoM\\_3918 Towards 2010 Targets Phase I.doc](#)

(6 pages)

# Towards 2010 Biodiversity Targets

## Minutes of the Virtual Project Appraisal Committee (PAC) Meeting for the Global Project *Support to GEF Eligible CBD Parties for carrying out 2010 Biodiversity Targets National Assessments Phases I*

---

### Dates

Email invitation to the virtual PAC meeting was distributed on Wednesday, 21 November 2007. The deadline of Wednesday, 05 December 2007 was provided for receiving written comments.

### Invited to the PAC meeting

#### From UNDP Environment Finance Group (EFG):

- § Yannick Glemarec, Executive Coordinator
- § John Hough, Acting Deputy Executive Coordinator & Principal Technical Advisor, Biodiversity
- § Nik Sekhran, Senior Technical Adviser, Biodiversity
- § Tim Clairs, Senior Technical Adviser, Biodiversity / Land Degradation
- § Cathy Maize, Programme Associate
- § Bo Lim, Principal Technical Advisor and Chief of the Capacity Development and Adaptation Cluster
- § Tom Twining-Ward, Technical Specialist, Capacity Development
- § Mahenau Agha, Donor Liaison and Partnerships Officer
- § Xiumei Zhang, Finance Officer

#### Regional Bureaux' Environmental Focal Points:

- § Africa: Metsi Makhetha
- § Latin America and Caribbean : Raquel Herrera
- § Arab-States: Moin Karim
- § Asia-Pacific: Maria Suokko
- § Europe & CIS: Oksana Leshchenko

### Documentation analysed (as distributed by email on Wed, 21 Nov 2007)

- § Project document (81 pages)
- § Appendices, containing co-financing letters and CEO Approval letter (7 pages)

### Comments received:

Comments were received from Xiumei Zhang (on 27 Nov 2007) and from Jay Dowle (on 07 Dec 2007 on behalf of Mahenau Agha).

The first set of comments pertained to small details in the PRODOC that needed to be changed in order to comply with both financial requirements and the requirements of the implementation modality (DEX).

The second set of comments was a discussion of the possibility of preparing a project write-up to be published on the UNDP/EFG Website as a “Spotlight”, as well as creating a link under “Joint Programmes”.

No other comments were received from PAC participants, although the project preparation process counted previously on extensive comments and feedback from John Hough, Tim Clairs and Cathy Maize.

It is also worth noting that a Project Steering Committee Meeting was held over the phone on Monday 26 Nov 2007 with participation from UNDP, UNEP, CBD Secretariat, GEF Secretariat and Countdown 2010 (all key project partners). In spite of communication difficulties (bad quality of phone lines), important comments to the PRODOC were provided by these partners. In connection with it, a draft reference manual for the fourth national report being developed by the CBD Secretariat has been shared and collaboration modalities with regard to the project’s webpages were discussed.

New York, 03 January 2008



---

Cleared by John Hough  
Acting Deputy Executive Coordinator  
& Principal Technical Advisor, Biodiversity

**APPENDIX 4B. MINUTES OF PROJECT APPRAISAL COMMITTEE MEETING**

[PIMS 3918 4NR Phase II PAC Minutes signed 16 Dec 08.pdf](#)

(6 pages)

**Minutes of the Meeting**  
**PROJECT APPRAISAL COMMITTEE**  
**Substantive revision of PRODOC for the global joint project UNDP-UNEP/GEF**  
**“Support to GEF Eligible CBD Parties for carrying out**  
**2010 Biodiversity Targets National Assessments – Phase II”**  
**Held on 25 Nov 2008**

Prepared by FI / CM - 04 Dec 2008

---

***Chair:***

Douglas Gardner (BDP)

***Present:***

Barbara Barunge, Policy Advisor (Macroeconomics), RBA

Douglas Gardner, Deputy Director, BDP/Directorate

Jason Pronyk, Management Specialist, BDP/Directorate

Oksana Leshchenko, Environment Focal Point, RBEC

Sylvester Kassa Thomas, BDP/PSU

Gordon Johnson, Practice Manager, BDP/EEG

Elson Decolongon, Finance & Operations Associate, BDP/EEG

Cathy Maize, Programme Associate for Biodiversity, BDP/EEG

Fabiana Issler, Global Focal Point for Biodiversity Enabling Activities and Regional Technical Advisor for Africa, BDP/EEG/ Pretoria (Presenter)

***Regrets and comments:***

Jennifer Colville (BDP), Maria Suokko (RBAP)

***Decision:***

PRODOC approved with DEX modality, without the need for new DEX clearance, given that this is just a second phase of the same project.

***Proceedings:***

**1. Opening remarks from the Chair:**

Opens the meeting and invites the project manager (Fabiana Issler, connecting through “skype-video-conference” from Dakar) to present the PRODOC.

**2. Fabiana Issler (project manager) - Global Focal Point for Biodiversity Enabling Activities and Regional Technical Advisor for Africa**

- Provides the background and overview of the project and explains why this is substantively revised PRODOC.
- The project provides a framework for financing and substantively supporting consultations at the country level that are aimed at assessing progress towards the 2010 biodiversity commitments (2010 target) and preparing the fourth national report to the CBD COP to GEF eligible countries.

- The PRODOC presented is a substantive revision, which reflects additional GEF resources for Phase II of the project, but also captures slight improvements / modifications in design since the initiation of Phase I. A total of 42 countries were assisted in Phase I. With the addition of Phase II, a total of 90 countries can be assisted.
- The Phase II Medium Size Project Proposal was approved by the GEF on October 08, 2008. The project is eligible within the GEF's Enabling Activities window and is implemented through a partnership between UNDP and UNEP.
- The collaboration between UNDP and UNEP is based on each agency's comparative advantages. The project has been instrumental in deepening the partnership with UNEP and the CBD Secretariat.

### **3. General remarks and comments from PAC participants:**

#### **A) Oksana Leshchenko (RBEC)**

- Supports the phase II project, indicating that Environment is an important part of RBEC's mainstreaming strategy.
- Heard positive feedback from CBD focal points in the region about the project.

#### **B) Barbara Barunge (RBA), also transmitting comments from Metsi Makhetha**

- Welcomes the project and its focus on LDCs and SIDS
- Indicated that it is important to sensitise COs about the relevance of convention reporting.
- Regarding the issue of data gathering, asks whether the data to be gathered in connection with 2010 target and fourth national report may eventually be useful to feed the data needs with respect to payments for ecosystem services schemes in Africa (brings the example of Namibia forward).

#### ***Response from F. Issler:***

- Fourth national report is more analytical and results-oriented than previous reports to the CBD COP. It will oblige countries to think more strategically about CBD implementation, collect and analyse data and to use for assessing progress towards the 2010 biodiversity target.
- National CBD reporting to conventions can be a challenge to some countries, particularly those with systemic capacity constraints and large responsibility for conserving biodiversity
- The project is reaching out to poor countries particularly in Africa and Pacific SIDS through focused communications with those countries, mainly through RCUs and COs, but also through the CBD Sec contacting national focal CBD points.
- The data collected for the fourth national report is normally used by the CBD Sec in the preparation of the Global Biodiversity Outlook. But countries may use it to whatever they find fit. In addition, many of the 2010 targets are part of the GEF Strategic Priorities monitoring framework for the biodiversity focal area. The idea is that, once countries have collected the data for assessing progress towards the 2010 target, they can for example become part of the M&E framework for GEF biodiversity project or other.

#### **C) Jason Pronyk, BDP/Directorate**

- Suggests that reference to the MYFF is "cleaned" on the signature page.



- Asks whether the project has a dashboard to monitor implementation and delivery in the various countries.
- Queries in particular how activities are monitored.

**D) Sylvester Kassa Thomas, BDP/PSU**

- Reminds that the project board structure should be inserted
- Reminds that responsibilities should be laid out in “Prince II ” format
- Reminds that the text under the section on ‘Legal Context’ (paras 48 and 49) deviates from normal text. Will provide correct text for amendment.

***Response from F. Issler:***

- Signature page / document will be corrected
- Explains that the project has a database in MS Access to control country requests submissions, approvals and attribution of Atlas Activity numbers. Else the project uses Atlas to monitor delivery.
- The database allows the project to monitor dwell time (time between submission of a valid proposal and FSA issuance) among other variables. Dwell time was 31 days in Phase I, but it will be difficult to maintain it in phase II, as there are already delays.
- The monitoring of country-level activities is left to the COs. At the global level, the submission of reports is monitored through the CBD Website.

**4. Comments from the on Chair:**

- Normally, the transition between a phase 1 and a phase 2 in a project is marked by an evaluation of the first phase. This is not the case here. The evaluation will take place at the end of Phase II.
- A question is posed on how UNDP recovers costs beyond the GEF Implementing Agency fee. (It is explained that COs recover costs through ISS and in accordance with the Universal Price List, and that this probably amounts to \$500 per sub-project, i.e. per country).
- The Chair notes that the costs of running the project (RTA time, plus PA time and CO staff time) possibly surpasses what UNDP is able to obtain in terms of fees (at HQ level) and cost-recovery (at HQ level).

***Response from F. Issler:***

- On the issue of evaluation, it was explained that the important evaluation for the GEF is the final, while the important one for UNDP is the mid-term. Still, if an evaluation was to be carried out at mid-term, it would be costly for the project (representing two less countries assisted) and could delay implementation. Dwell time (how fast assistance to countries is delivered) is a key success indicator in the project. This is why the final evaluation was prioritised. In any case, this is a tested model, e.g. with the similar global project “Third National Reports”, only that UNDP is doing it now in partnership with UNEP.
- On the cost recovery issue, it is explained that UNDP may not be recovering costs fully in this project. At the time of GEF submission, it was clear that this would probably be the case. However, at that particular moment, fostering the relationship with UNEP and the CBD Secretariat was considered more important than cost-recovery. If the project was larger, cost recovery would have to be more carefully catered for.

**5. Decision and final remarks from the Chair**

- The PAC approved the project with the same management arrangements as in Phase I.
- This is just Phase II of the same project, with a very modest substantive revision with a budgetary revision of the PRODOC, adding more countries and more funds.
- No new DEX clearance is needed, given that there are no changes in management arrangements and this is simply a continuation of the existing project.
- Comments received during the PAC, as well as those received by mail, will have to be incorporated in the final PRODOC for signature.
- It is recommended that UNDP avoids this type of project design in the future due to cost-recovery issues and a possible liability for UNDP's reputation, when there are delays in payments to countries. Likewise, building capacity for Government's to fulfil their responsibilities to report is highly desirable.

### Annex 1. Comments received by email and response

| Comments received by mail  | Response   |
|--|--|
| <p><b>From Jennifer Colville</b><br/>           Policy Advisor<br/>           Capacity Assessments, Capacity Development Group / BDP<br/>           Received on 25 November 2008</p>   |  |
| <p>We see a number of activities that will aim to support capacity development, specifically, the generation, management and dissemination of knowledge to support the 2010 targets assessment process by countries. Knowledge is one of UNDP's key capacity development response areas, and the more we can support and enable it, the better. One small question though on the management and facilitation of the portal ... who will manage/facilitate it? Active solicitation of experience, lessons learned, and knowledge products, especially promoting south-south exchange, will be critical to its ongoing usefulness for the target audience.</p> | <p>The Portal is run by UNEP. UNDP is only involved marginally.</p>  |
| <p>We also see a number of opportunities for further support to capacity development. We tend to identify and analyze these opportunities by asking the questions "capacity for whom?" and "capacity for what?" The answers to these questions help us define support to capacity development in a much clearer and focused manner. For example, Para 17 states that the project's development goal is to contribute to "improved planning and decision-making." It would be helpful to articulate whose planning and decision-making capacities the project aims to develop (is it the national CBD</p>   | <p>Para 17 has been slightly amended to refer to the biodiversity sector.</p> <p>The question here is that we cannot say it all hinges upon the capacity of CBD focal points. There is much to it. When a party submits a report to a convention, there is a whole sector behind the preparation of this report. Given that it is the country that is the Party to the convention, the contents and the submission of the report are ultimately the responsibility of the country's government. Obviously, the focal points play a</p> |

| Comments received by mail   | Response   |
|---|--|
| <p>focals? If so, can we state that explicitly?) Another example is Para 18 which states that the main objective is to assess progress ... through a country-wide stakeholder consultation process ... and to report and communicate on it. These sound like they could be additional capacities to be developed (in addition to planning and decision-making), in answer to the “capacity for what?” question. If so, whose capacities are these (again, the CBD focals)?</p>  | <p>pivotal role in it, but he/she is not alone.</p> <p>We have added “through their respective biodiversity sectors” right after “CBD Parties” in paragraph 18.</p> <p>The interesting thing about 4NR is that it is much more analytical and results-oriented than previous national reports to the CBD. That in itself and the focus on 2010 target and links to MDGs will enhance the capacity building element of the reporting financed by the project.</p>   |
| <p>Once there is clarity regarding what and whose capacities the project addresses, there appears to be significant opportunity for support to capacity development through the “substantive” support provided to up to 48 new countries (output 1.0). It is not clear, however, what that substantive support is. We might suggest laying out a plan or menu of support to these 48 countries, from which they can pick and choose depending upon their needs as they develop their requests. Some countries may need to start at the beginning, with a capacity assessment to understand what capacities they have in place, where their needs are, and what the gaps are; this would naturally lead to the formulation of a capacity development, preferably leveraging UNDP’s capacity development response areas. Other countries may have a clear understanding of their capacity constraints, and need support in formulating an innovative capacity development response. And other countries may need support in advocating for change, advocating for budget support for investment in capacity development, etc.</p> | <p>Outcome 2 actually focuses mostly on the knowledge management elements. The word “substantive” under output 1.0 refers to the fact that proposals are sometimes commented upon and UNDP Environment Focal Points often participate in the consultation workshops organised at the country level, playing an active role in it.</p> <p>The following phrase was added at the end of the description of output 1.0: <i>“Finally, substantive support to countries is mostly provided by UNDP through screening (a task performed by COs, RCUs and HQ).”</i></p> |
| <p>In another vein, the linkages with other initiatives: in the UNDG MDG Support Project entry, there is mention of the MDG Needs Assessment Tools. There has been much work done between the MDG-S Team and the Capacity Development Group to foster the connection and complementarity between Needs Assessment and Capacity Assessment. Might be worth considering a mention of that connection in that section.</p>   | <p>This is mentioned on page10 under “UNDP MDG Support Project”.</p>   |
| <p><b>From Maria Suokko</b><br/> Programme Specialist<br/> South and West Asia Division, Regional Bureau for Asia and the Pacific (RBAP)</p>  |  |

| Comments received by mail   | Response   |
|---|--|
| Received on 25 Nov 2008   |  |
| <p>RBAP supports this project. It is a necessary and useful project that has been developed in close consultations with the RBAP BD team based in Bangkok. At this stage, we do not have any substantive comments. RBAP hopes to continue supporting countries on their BD enabling activities under this initiative.</p> | <p>Support from RBAP is highly appreciated. On the same date that comments were received, a response was given via email, listing the countries assisted in the region and explaining how UNDP handled a request from Myanmar.</p> |

## Annex 2. Email to Maria Suokko (RBAP)

Message

RE: Project Appraisal Committee (PAC) for the GEF Funded Global Project: Support to GEF Eligible CBD Parties for carrying out 2010 Biodiversity Targets National Assessments - Phase II

From: Fabiana Issler [fabiana.issler@undp.org]  
 To: 'Maria Suokko'  
 Cc: 'Cathy Maize'; 'Mari Huseby'  
 Subject: RE: Project Appraisal Committee (PAC) for the GEF Funded Global Project: Support to GEF Eligible CBD Parties for carrying out 2010 Biodiversity Targets National Assessments - Phase II

Sent: Tue 25/11/2008 3:43 PM

Dear Maria,

Comment noted with many thanks. We will incorporate this in the minutes.

For your info, the following countries for your region have cleared proposals:

| 2010 Approvals - Main        |       |                                |  |
|------------------------------|-------|--------------------------------|--|
| Countries as written in PIMs | Phase | Country request cleared [Date] | Funding Authorised [Date]              |
| AFGHANISTAN                  | 1     | 14-Jan-08                      | 19-Mar-08                              |
| VIET NAM                     | 1     | 10-Mar-08                      | 20-Mar-08                              |
| INDONESIA                    | 1     | 03-Apr-08                      | 10-Apr-08                              |
| PHILIPPINES                  | 1     | 02-Apr-08                      | 10-Apr-08                              |
| INDIA                        | 1     | 14-May-08                      | 15-May-08                              |
| NEPAL                        | 1     | 30-Apr-08                      | 14-May-08                              |
| CHINA                        | 1     | 07-May-08                      | 12-May-08                              |
| NIUE                         | 1     | 14-May-08                      | 15-May-08                              |
| SRI LANKA                    | 1     | 15-May-08                      | 16-May-08                              |
| BHUTAN                       | 1     | 02-Jul-08                      | 07-Jul-08                              |
| MALAYSIA                     | 1     | 02-Jul-08                      | 07-Jul-08                              |
| PAKISTAN                     | 2     | 02-Jul-08                      | Waiting operationalisation of Phase II |

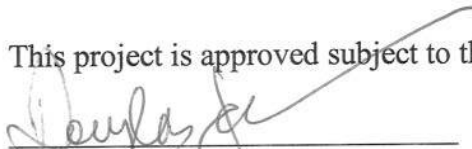
We have received a request from Myanmar, but UNEP will be channeling assistance to them through an on-going BD EA.

Thank you again

Kind regards,  
 F

Fabiana Issler  
 Regional Technical Advisor for Biodiversity  
 UNDP Environment and Energy Group (EEG)  
 GEF Regional Coordination Unit  
 351 Schoeman Str. - P O Box 13196,  
 The Tramshed, Pretoria - 0126, South Africa  
 Landline: +27 12 354 8128  
 Mobile: +27 82 300 4665

This project is approved subject to the revisions outlined in the minutes of this meeting.

  
 Douglas Gardner  
 Deputy Director  
 Bureau for Development Policy

## APPENDIX 5. DRAFT TEMPLATE FOR FRAMEWORK SERVICE AGREEMENT

[UNDP Letterhead]

[Date]

Dear Mr/s. **ResRep**,

Subject: Country: **Activity \_\_\_** under UNDP/GEF Global project entitled “**Support to GEF Eligible CBD Parties for carrying out 2010 Biodiversity Targets National Assessments - Phase II (4NR)**” (PIMS 3918)

The HQ managed project entitled “Support to GEF Eligible CBD Parties for carrying out 2010 Biodiversity Targets National Assessments - Phases I and II (4NR-) (PIMS 3918)” has received its final approval in accordance with the established GEF and UNDP procedures. As a sub-activity of the aforementioned HQs managed project, please be advised that the attached request for assistance entitled “Proposal for carrying out 2010 Biodiversity Targets National Assessments: GEF Additional Funding for Biodiversity Enabling Activities” budget and description of activities planned for 2007/2008 have been approved. Your office is hereby authorized to charge GEF account below for the usage of US \$<20,000 (inclusive of ISS).

In order to ensure agile provision of services to the designated lead agency, kindly note the procedures for the use of the funds. We are delegating the approval of specific expenditures to your office. This procedure is effective immediately, and there is no need for separate authorization for each expenditure in Atlas by our unit in New York.

Kindly note the project is a Global Project and ASL-Cash Limits have been allocated at Project level under B0100. No separate ASLs are needed at CO department level. Your office should be able to spend within the total ASL-Cash Limits allocated to this project.

The Award and Project has been created for your office with the following information:

|       |                |            |       |                   | Project     |              |              |       |
|-------|----------------|------------|-------|-------------------|-------------|--------------|--------------|-------|
| GLBU  | Budgetary Code | Oper. Unit | Fund  | Budget Department | Project No. | Activity ID  | Impl. Agency | Donor |
| UNDP1 | 72600          | H21        | 62000 | B0_ _ _           | 00057358    | ACTIVITY No. | 001981       | 10003 |

*FOR EXPENDITURE: Kindly ensure that expenditure is charged as per information below:*

Chart of Account to Charge: GEF BD 4NR –PIMS 3918

|       |                     |            |       |                        | Project     |              |              |       |
|-------|---------------------|------------|-------|------------------------|-------------|--------------|--------------|-------|
| GLBU  | Expenditure Account | Oper. Unit | Fund  | Expenditure Department | Project No. | Activity ID  | Impl. Agency | Donor |
| UNDP1 | 72605               | H21        | 62000 | CO to fill-in          | 00057358    | ACTIVITY No. | 001981       | 10003 |

Mr/s. **Firstname Lastname**

Resident Representative

UNDP, **Country**

Kindly note that the above mentioned budget and description of activities will be regarded as the framework service agreement between UNDP/GEF, your Office and the Government of [COUNTRY] to incur expenditures according to the attached approved “Proposal for preparation of the Third National Report on Biodiversity: GEF Additional Funding for Biodiversity Enabling Activities.”

In accordance with the approved “Proposal for carrying out 2010 Biodiversity Targets National Assessments: GEF Additional Funding for Biodiversity Enabling Activities”, your office shall disburse up to the total amount authorized: (a) to pay for the goods and supplies purchased by your office for the purposes of carrying out the approved activities; (b) to pay for the services contracted by your office for the purposes of carrying out the approved activities; and (c) to pay for any other non administration costs your office incurs for the purposes of carrying out the preparation of the Fourth National Report on Biodiversity.

As this is a Global DEX project, the expenditure of the grant amount at the CO level should also be carried out using DEX procedure. In case the Government prefers to have greater flexibility in management of funds (as in the case of NEX projects) the CO should consider subcontracting the entire grant amount to the Government lead agency for them to manage this with greater flexibility and direct supervision. If requested by the Government, and within the limits imposed by the above-mentioned guidelines, your office may carry out the necessary adjustments to the budget and/or activities selected.

Relevant supporting documentation should be maintained by your office in case of future Audit. At the conclusion of the support, kindly confirm the operational completion of this activity and please provide the final report (i.e. the country's Third National Report to the CBD) to UNDP/GEF.

Yours sincerely,

Yannick Glemarec

Executive Coordinator

UNDP Global Environment Facility

Cc: Mr/s. [Firstname Lastname], UNDP/GEF Country Office Focal Point

Ms. Fabiana Issler, GEF Regional Coordinator, Dakar

Mr. Elson Decolongon, UNDP/GEF

Ms. Cathy Maize, UNDP/GEF



## APPENDIX 6. WORK PLAN AND BUDGET 2008 / 2009 - FOR ENTRY INTO ATLAS

Award: 00047594

Award Title: PIMS 3918 BD MSP: GLO Support to CBD 2010 targets + 4NR

Project ID: 00057358

Project Objective/Atlas Output/Project = PIMS 3918 BD: MSP: GLO Support to CBD 2010 targets + 4NR

| Project Outcome/Atlas Activity |    |                           |   | Responsible Party | Source of funds | ERP/Atlas Budget Description |        | 2008   | 2009   | 2010... | Total  |
|--------------------------------|----|---------------------------|---|-------------------|-----------------|------------------------------|--------|--------|--------|---------|--------|
| Activity                       | 1  | HQs                       | <b>Knowledge Mgt, Learning, feedback M&amp;E</b> (Expenditures will be Contractual Services, Professional Svces, etc) | HQs               | GEF             | 72600                        | Grants | 39,700 | 20,000 |         | 59,700 |
| Activity                       | 2  | HQs                       | <b>Project Management Budget</b> (expenditures will be Indiv Svces)   | HQs               | GEF             | 72600                        | Grants | 5,500  |        |         | 5,500  |
| Activity                       | 3  | MAURITANIA                | 2010 BD Targets National Assessment   | CO                | GEF             | 72600                        | Grants | 20,000 |        |         | 20,000 |
| Activity                       | 4  | CONGO DEMOCRATIC REPUBLIC | 2010 BD Targets National Assessment   | CO                | GEF             | 72600                        | Grants | 20,000 |        |         | 20,000 |
| Activity                       | 5  | KYRGYZSTAN                | 2010 BD Targets National Assessment   | CO                | GEF             | 72600                        | Grants | 20,000 |        |         | 20,000 |
| Activity                       | 6  | AFGHANISTAN               | 2010 BD Targets National Assessment   | CO                | GEF             | 72600                        | Grants | 20,000 |        |         | 20,000 |
| Activity                       | 7  | TAJIKISTAN                | 2010 BD Targets National Assessment   | CO                | GEF             | 72600                        | Grants | 20,000 |        |         | 20,000 |
| Activity                       | 8  | ARMENIA                   | 2010 BD Targets National Assessment   | CO                | GEF             | 72600                        | Grants | 19,800 |        |         | 19,800 |
| Activity                       | 9  | COTE D'IVOIRE             | 2010 BD Targets National Assessment   | CO                | GEF             | 72600                        | Grants | 20,000 |        |         | 20,000 |
| Activity                       | 10 | LIBERIA                   | 2010 BD Targets National Assessment   | CO                | GEF             | 72600                        | Grants | 20,000 |        |         | 20,000 |
| Activity                       | 11 | TURKMENISTAN              | 2010 BD Targets National Assessment   | CO                | GEF             | 72600                        | Grants | 20,000 |        |         | 20,000 |
| Activity                       | 12 | DJIBOUTI                  | 2010 BD Targets National Assessment   | CO                | GEF             | 72600                        | Grants | 20,000 |        |         | 20,000 |
| Activity                       | 13 | JORDAN                    | 2010 BD Targets National Assessment   | CO                | GEF             | 72600                        | Grants | 20,000 |        |         | 20,000 |
| Activity                       | 14 | TUNISIA                   | 2010 BD Targets National Assessment   | CO                | GEF             | 72600                        | Grants | 20,000 |        |         | 20,000 |
| Activity                       | 15 | MOLDOVA, REPUBLIC OF      | 2010 BD Targets National Assessment   | CO                | GEF             | 72600                        | Grants | 20,000 |        |         | 20,000 |
| Activity                       | 16 | SAO TOME AND PRINCIPE     | 2010 BD Targets National Assessment   | CO                | GEF             | 72600                        | Grants | 20,000 |        |         | 20,000 |
| Activity                       | 17 | VIET NAM                  | 2010 BD Targets National Assessment   | CO                | GEF             | 72600                        | Grants | 20,000 |        |         | 20,000 |
| Activity                       | 18 | CROATIA                   | 2010 BD Targets National Assessment   | CO                | GEF             | 72600                        | Grants | 20,000 |        |         | 20,000 |

| Project Outcome/Atlas Activity |    |                                  |                                     | Responsible Party | Source of funds | ERP/Atlas Budget Description |        | 2008           | 2009 | 2010... | Total          |
|--------------------------------|----|----------------------------------|-------------------------------------|-------------------|-----------------|------------------------------|--------|----------------|------|---------|----------------|
| Activity                       | 19 | MOROCCO                          | 2010 BD Targets National Assessment | CO                | GEF             | 72600                        | Grants | 20,000         |      |         | 20,000         |
| Activity                       | 20 | NIGER                            | 2010 BD Targets National Assessment | CO                | GEF             | 72600                        | Grants | 20,000         |      |         | 20,000         |
| Activity                       | 21 | PHILIPPINES                      | 2010 BD Targets National Assessment | CO                | GEF             | 72600                        | Grants | 20,000         |      |         | 20,000         |
| Activity                       | 22 | INDONESIA                        | 2010 BD Targets National Assessment | CO                | GEF             | 72600                        | Grants | 20,000         |      |         | 20,000         |
| Activity                       | 23 | CAMEROON, REPUBLIC OF            | 2010 BD Targets National Assessment | CO                | GEF             | 72600                        | Grants | 20,000         |      |         | 20,000         |
| Activity                       | 24 | CHILE                            | 2010 BD Targets National Assessment | CO                | GEF             | 72600                        | Grants | 20,000         |      |         | 20,000         |
| Activity                       | 25 | BOSNIA AND HERZEGOVINA           | 2010 BD Targets National Assessment | CO                | GEF             | 72600                        | Grants | 20,000         |      |         | 20,000         |
| Activity                       | 26 | TOGO                             | 2010 BD Targets National Assessment | CO                | GEF             | 72600                        | Grants | 20,000         |      |         | 20,000         |
| Activity                       | 27 | NICARAGUA                        | 2010 BD Targets National Assessment | CO                | GEF             | 72600                        | Grants | 20,000         |      |         | 20,000         |
| Activity                       | 28 | UGANDA                           | 2010 BD Targets National Assessment | CO                | GEF             | 72600                        | Grants | 20,000         |      |         | 20,000         |
| Activity                       | 29 | CHINA                            | 2010 BD Targets National Assessment | CO                | GEF             | 72600                        | Grants | 20,000         |      |         | 20,000         |
| Activity                       | 30 | MOZAMBIQUE                       | 2010 BD Targets National Assessment | CO                | GEF             | 72600                        | Grants | 20,000         |      |         | 20,000         |
| Activity                       | 31 | NEPAL                            | 2010 BD Targets National Assessment | CO                | GEF             | 72600                        | Grants | 20,000         |      |         | 20,000         |
| Activity                       | 32 | GUINEA                           | 2010 BD Targets National Assessment | CO                | GEF             | 72600                        | Grants | 20,000         |      |         | 20,000         |
| Activity                       | 33 | SAINT VINCENT AND THE GRENADINES | 2010 BD Targets National Assessment | CO                | GEF             | 72600                        | Grants | 20,000         |      |         | 20,000         |
| Activity                       | 34 | DOMINICA                         | 2010 BD Targets National Assessment | CO                | GEF             | 72600                        | Grants | 20,000         |      |         | 20,000         |
| Activity                       | 35 | RUSSIAN FEDERATION               | 2010 BD Targets National Assessment | CO                | GEF             | 72600                        | Grants | 20,000         |      |         | 20,000         |
| Activity                       | 36 | CUBA                             | 2010 BD Targets National Assessment | CO                | GEF             | 72600                        | Grants | 20,000         |      |         | 20,000         |
| Activity                       | 37 | INDIA                            | 2010 BD Targets National Assessment | CO                | GEF             | 72600                        | Grants | 20,000         |      |         | 20,000         |
| Activity                       | 38 | NIUE                             | 2010 BD Targets National Assessment | CO                | GEF             | 72600                        | Grants | 20,000         |      |         | 20,000         |
| Activity                       | 39 | SRI LANKA                        | 2010 BD Targets National Assessment | CO                | GEF             | 72600                        | Grants | 20,000         |      |         | 20,000         |
| Activity                       | 40 | GHANA                            | 2010 BD Targets National Assessment | CO                | GEF             | 72600                        | Grants | 20,000         |      |         | 20,000         |
| Activity                       | 41 | LEBANON                          | 2010 BD Targets National Assessment | CO                | GEF             | 72600                        | Grants | 20,000         |      |         | 20,000         |
| Activity                       | 42 | SYRIAN ARAB REPUBLIC             | 2010 BD Targets National Assessment | CO                | GEF             | 72600                        | Grants | 20,000         |      |         | 20,000         |
| Activity                       | 43 | BHUTAN                           | 2010 BD Targets National Assessment | CO                | GEF             | 72600                        | Grants | 20,000         |      |         | 20,000         |
| Activity                       | 44 | MALAYSIA                         | 2010 BD Targets National Assessment | CO                | GEF             | 72600                        | Grants | 20,000         |      |         | 20,000         |
| <b>SUBTOTAL PHASE I</b>        |    |                                  |                                     |                   |                 |                              |        | <b>885,000</b> |      |         | <b>885,000</b> |



| Project Outcome/Atlas Activity                                |    |                                  |                                     | Responsible Party | Source of funds | ERP/Atlas Budget Description |        | 2008           | 2009                         | 2010... | Total            |
|---|----|----------------------------------|-------------------------------------|-------------------|-----------------|------------------------------|--------|----------------|------------------------------|---------|------------------|
| <b>PHASE II -- up to 940,000 available for country grants</b> |    |                                  |                                     |                   |                 |                              |        |                | (up to \$20,000 per country) |         |                  |
| Activity  | 45 | Yemen                            | 2010 BD Targets National Assessment | CO                | GEF             | 72600                        | Grants |                | 20,000                       |         | 20,000           |
| Activity  | 46 | PAKISTAN                         | 2010 BD Targets National Assessment | CO                | GEF             | 72600                        | Grants |                | 20,000                       |         | 20,000           |
| Activity  | 47 | Angola                           | 2010 BD Targets National Assessment | CO                | GEF             | 72600                        | Grants |                | 20,000                       |         | 20,000           |
| Activity  | 48 | Dominican Republic               | 2010 BD Targets National Assessment | CO                | GEF             | 72600                        | Grants |                | 20,000                       |         | 20,000           |
| Activity  | 49 | Burkina Faso                     | 2010 BD Targets National Assessment | CO                | GEF             | 72600                        | Grants |                | 20,000                       |         | 20,000           |
| Activity  | 50 | Argentina                        | 2010 BD Targets National Assessment | CO                | GEF             | 72600                        | Grants |                | 20,000                       |         | 20,000           |
| Activity  | 51 | Ethiopia                         | 2010 BD Targets National Assessment | CO                | GEF             | 72600                        | Grants |                | 20,000                       |         | 20,000           |
| Activity  | 52 | Algeria                          | 2010 BD Targets National Assessment | CO                | GEF             | 72600                        | Grants |                | 20,000                       |         | 20,000           |
| Activity  | 53 | Mali                             | 2010 BD Targets National Assessment | CO                | GEF             | 72600                        | Grants |                | 20,000                       |         | 20,000           |
| Activity  | 54 | Grenada                          | 2010 BD Targets National Assessment | CO                | GEF             | 72600                        | Grants |                | 20,000                       |         | 20,000           |
| Activity  | 55 | Bahamas                          | 2010 BD Targets National Assessment | CO                | GEF             | 72600                        | Grants |                | 20,000                       |         | 20,000           |
| Activity  | 56 | Costa Rica                       | 2010 BD Targets National Assessment | CO                | GEF             | 72600                        | Grants |                | 20,000                       |         | 20,000           |
| Activity  | 57 | Mauritius                        | 2010 BD Targets National Assessment | CO                | GEF             | 72600                        | Grants |                | 20,000                       |         | 20,000           |
| Activity  | 58 | Rwanda                           | 2010 BD Targets National Assessment | CO                | GEF             | 72600                        | Grants |                | 20,000                       |         | 20,000           |
| Activity  | 59 | Sudan                            | 2010 BD Targets National Assessment | CO                | GEF             | 72600                        | Grants |                | 20,000                       |         | 20,000           |
| Activity  | 60 | Botswana                         | 2010 BD Targets National Assessment | CO                | GEF             | 72600                        | Grants |                | 20,000                       |         | 20,000           |
| Activity  | 61 | Burundi                          | 2010 BD Targets National Assessment | CO                | GEF             | 72600                        | Grants |                | 20,000                       |         | 20,000           |
| Activity  | 62 | Chad                             | 2010 BD Targets National Assessment | CO                | GEF             | 72600                        | Grants |                | 20,000                       |         | 20,000           |
| Activity  | 63 | Tanzania                         | 2010 BD Targets National Assessment | CO                | GEF             | 72600                        | Grants |                | 20,000                       |         | 20,000           |
| Activity  | 64 | Egypt                            | 2010 BD Targets National Assessment | CO                | GEF             | 72600                        | Grants |                | 20,000                       |         | 20,000           |
| Activity  | 65 | Zambia                           | 2010 BD Targets National Assessment | CO                | GEF             | 72600                        | Grants |                | 20,000                       |         | 20,000           |
| Activity  | 66 | Venezuela                        | 2010 BD Targets National Assessment | CO                | GEF             | 72600                        | Grants |                | 20,000                       |         | 20,000           |
| Up to   | 97 | (up to 48 countries in Phase II) | 2010 BD Targets National Assessment | CO                | GEF             | 72600                        | Grants |                | up to 960,000                |         | up to 960,000    |
| <b>TOTAL PHASE I &amp; II</b>                                 |    |                                  |                                     |                   |                 |                              |        | <b>885,000</b> | <b>980,000</b>               |         | <b>1,865,000</b> |

Requests for funding anticipated under Phase II from: Governments of Afghanistan, Belarus (Republic of), Bosnia and Herzegovina, Colombia, Congo, Cote d'Ivoire, Egypt, Eritrea, Ghana, Indonesia, Kenya, Madagascar, Malawi, Mauritius, Mongolia, Morocco, Mozambique, Namibia, Pakistan, Togo, Turkey (and others).